



# TRAIL DESIGN STRATEGY SAN ANTONIO

December 2018

## CLIENT

City of San Antonio



CITY OF SAN ANTONIO  
**PARKS & RECREATION**

Xavier D. Urrutia  
Director  
City of San Antonio Parks &  
Recreation Department

Daniel Leal  
Project Manager  
City of San Antonio Parks &  
Recreation Department  
210.207.3004  
Daniel.Leal@sanantonio.gov

## PROJECT TEAM

Asakura Robinson (Project Lead)

asakura  
robinson

Margaret Robinson  
Principal-in-Charge  
512.351.9601  
margaret@asakurarobinson.com

Katie Coyne  
Project Manager  
512.351.9601  
katie@asakurarobinson.com

Big Red Dog (Project Subconsultant)





# 1 INTRODUCTION

The Howard W. Peak Greenway Trail System (Greenway) is a growing network of approximately 65 miles of developed multi-use and accessible trails. The Greenway trails wind through natural landscapes along many of San Antonio's waterways including Salado Creek, Leon Creek, Medina River, Westside Creeks (Apache, Alazan, Martinez, San Pedro, and Zarzamora), and the Tributary Creeks (Huesta Creek and Culebra Creek).

This Trail Design Strategy (TDS) was funded through the 2015 Sales Tax Proposition (Proposition 2 -Greenway Trail System) to enhance the general design standards of the Howard W. Peak Greenway Trail System.

The Trail Design Strategy establishes design principles, criteria for application, and enhanced features; which combine city-wide branded elements, with other features entitled to reflect the unique character of the neighborhoods in which they will be placed.

## PLAN OBJECTIVES:

- To provide an administrative vehicle to channel and harmonize current and upcoming design initiatives for the best possible impact on their surroundings and aligning them in a consistent way.
- To raise the quality of trails and make of this -already loved- infrastructure an even more valued city asset by residents, and eventually become an icon of San Antonio for visitors as well.
- To spark neighborhood revitalization, as a key component of urban regeneration, acting as a catalyst for infill redevelopment or neighborhood improvement in declining areas.
- To strategically apply Low Impact Development (LID) principles in an educational way, to showcase exemplary samples of best practices on water preservation and ecological design, for residents of all ages to enjoy and to get ideas from.

- To create a bolder city-wide vision for the entire Trail System, by thinking globally first, and acting locally then, in a coherent and consistent way, so each action/location speaks of the system and vice-versa.

To meet these objectives, this document is organized into six sections summarized as follows:

## STAKEHOLDER ENGAGEMENT

This section of the document outlines various meetings and workshops held between the consultant team, key Parks and Recreation Department stakeholders, stakeholders from other City of San Antonio Departments and allied entities, and the City of San Antonio’s Linear Creekway Parks Advisory Board.

## SITE ANALYSIS

The Site Analysis section includes pertinent information at a regional scale including an analysis of the regional planning context, demographic information, environmental context, land use and transportation, and trail use and capacity data. Each component of this section also includes a “Design Relevance” write-up aimed at acknowledging how to utilize information from the analysis section in applying the design strategies recommended in later chapters.

## TRAIL DESIGN VISION

The Trail Design Vision section includes further background on the Howard W. Peak Greenway program goals, the objectives of the Trail Design Strategy document, the criteria and approach used to determine design strategies, consideration of various recommended trail typologies based on frequency of use and population density, and an analysis of distinct “Character Areas” throughout the system.

## TRAIL INTERVENTIONS

The Trail Interventions section is the first section to outline the baseline recommended design characteristics of the future Howard W. Peak Greenway system. Within this section, trail widths

are recommended based on a preliminary analysis of necessary capacity needs for different sections of the trail and a comprehensive review of other cities’ greenway trail width guidelines. This section also introduces the concept of Tier 1 and Tier 2 trailheads and preliminary criteria for understanding how different variables should be used to prioritize trailhead investments.

## DESIGN TOOLKITS










The Design Toolkit section of this document is a result of the careful study of techniques appropriate for San Antonio based on both Stakeholder input and the Site Analysis, framed within the context of the larger Trail Design Vision. Within this section, site furnishings, hardscape elements, low impact development (LID) features, and other potential interventions are outlined in detail.

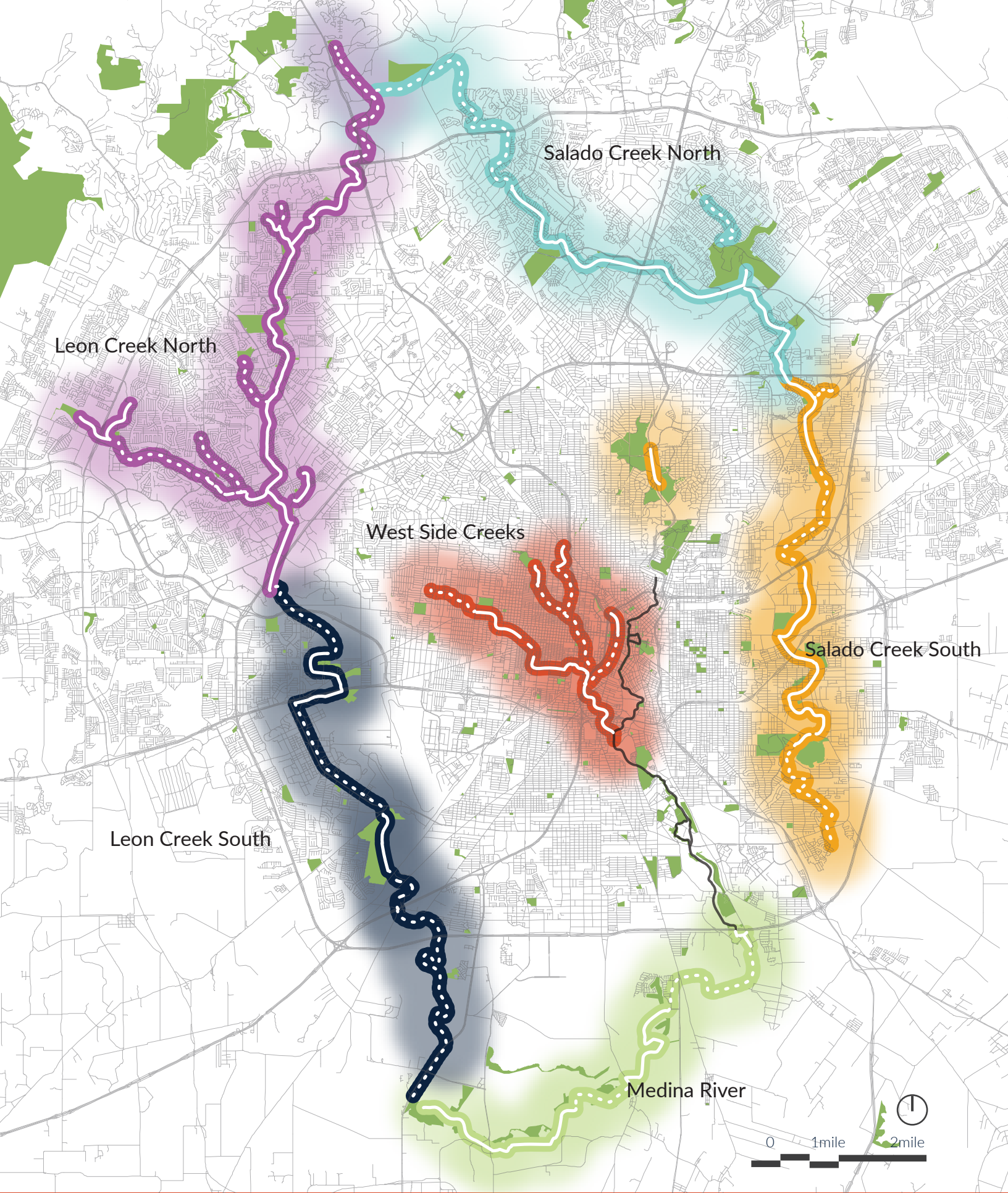
## MASTER MATRIX

The final section of this document condenses the design toolkits into a matrix describing appropriate application at Tier 1, Tier 2, and corridor sites while also tying items specific to certain Character Areas to their corresponding location.

## CHARACTER AREA MAP

*Character Areas of the Howard W. Peak Greenway System as recommended in the San Antonio Trail Design Strategy.*

-  Trail Complete
-  Trail Planned
-  Medina River
-  Salado Creek South
-  Salado Creek North
-  Leon Creek South
-  Leon Creek North
-  West Side Creeks
-  Mission and Museum Reach



Salado Creek North

Leon Creek North

West Side Creeks

Salado Creek South

Leon Creek South

Medina River

