

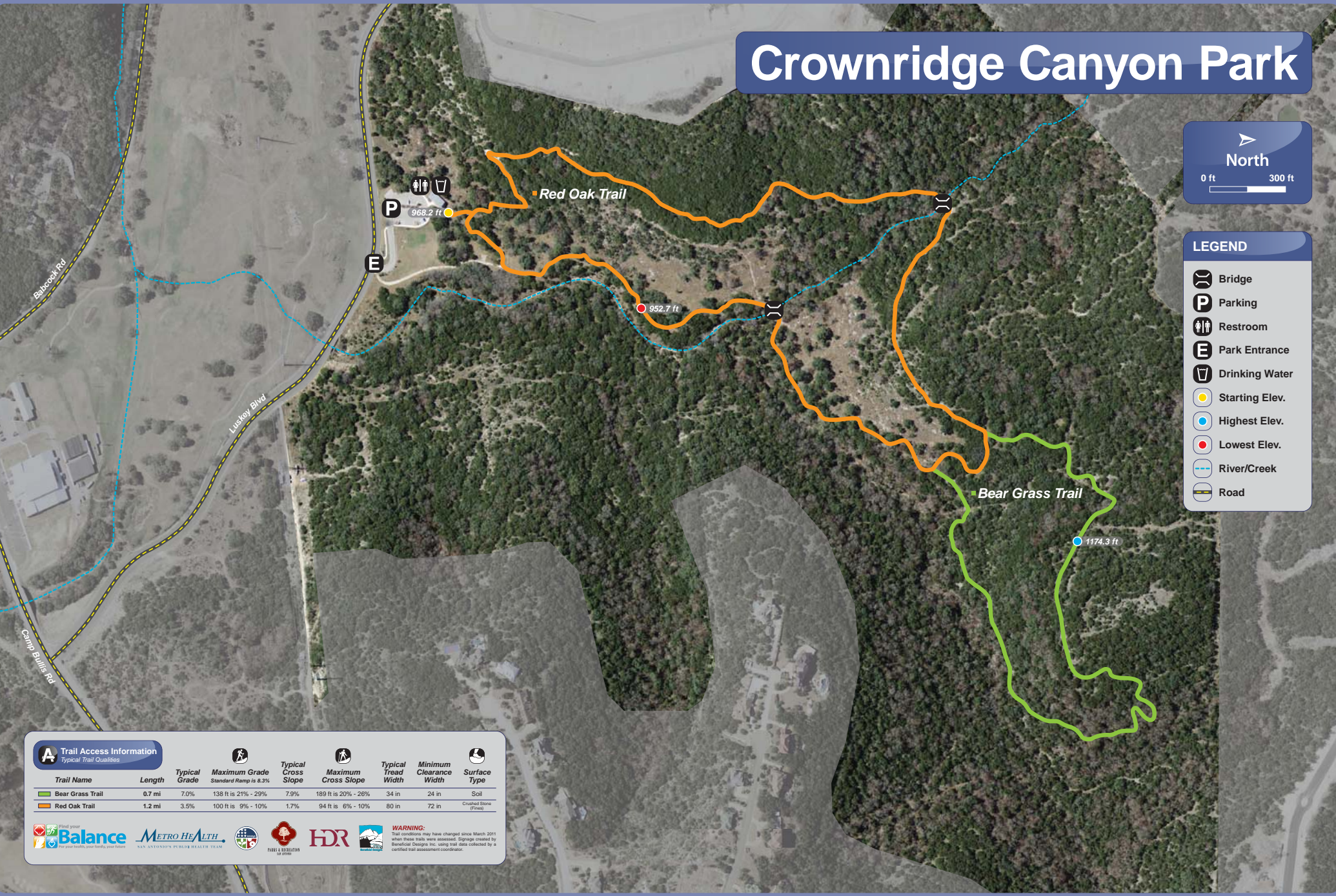
# Crownridge Canyon Park

North

0 ft 300 ft

**LEGEND**

- Bridge
- Parking
- Restroom
- Park Entrance
- Drinking Water
- Starting Elev.
- Highest Elev.
- Lowest Elev.
- River/Creek
- Road



**A Trail Access Information**  
Typical Trail Qualities

Trail Name	Length	Typical Grade	Maximum Grade Standard Ramp is 8.3%	Typical Cross Slope	Maximum Cross Slope	Typical Tread Width	Minimum Clearance Width	Surface Type
Bear Grass Trail	0.7 mi	7.0%	138 ft is 21% - 29%	7.9%	189 ft is 20% - 26%	34 in	24 in	Soil
Red Oak Trail	1.2 mi	3.5%	100 ft is 9% - 10%	1.7%	94 ft is 6% - 10%	80 in	72 in	Crushed Stone (Fines)

**WARNING:** Trail conditions may have changed since March 2011 when these trails were assessed. Signs created by Beneficial Designs Inc. using trail data collected by a certified trail assessment coordinator.