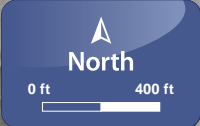
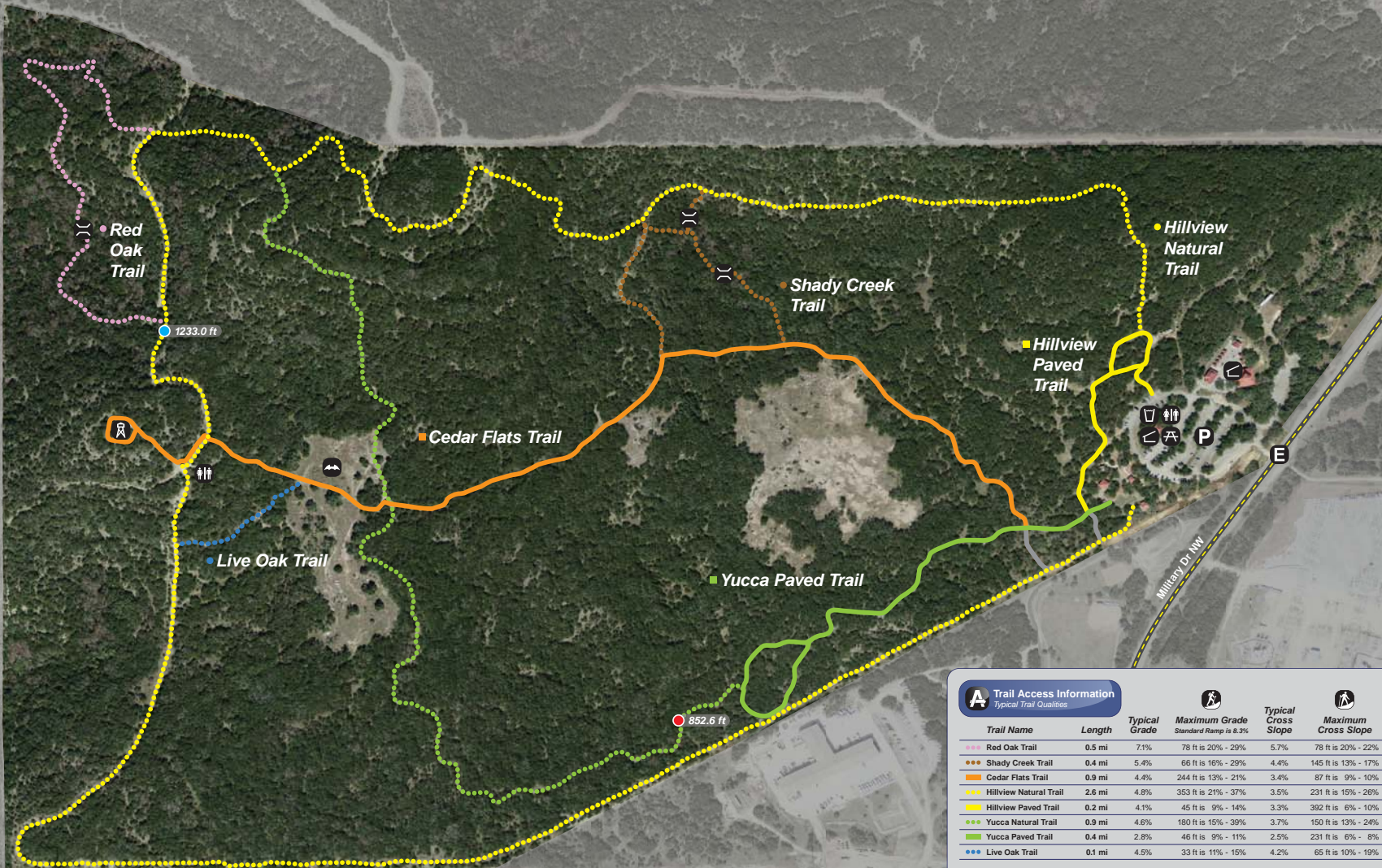


# Eisenhower Park



- ### LEGEND
- No Bikes
  - Tower
  - Bridge
  - Parking
  - Restroom
  - Picnic Area
  - Bat Houses
  - Park Entrance
  - Drinking Water
  - Shelter/Pavilion
  - Highest Elev.
  - Lowest Elev.
  - Natural Trail
  - Paved Trail
  - Road



### A Trail Access Information

*Typical Trail Qualities*

Trail Name	Length	Typical Grade	Maximum Grade Standard Ramp is 8.3%	Typical Cross Slope	Maximum Cross Slope	Typical Tread Width	Minimum Clearance Width	Surface Type
Red Oak Trail	0.5 mi	7.1%	78 ft is 20% - 29%	5.7%	78 ft is 20% - 22%	48 in	48 in	Aggregate / Gravel
Shady Creek Trail	0.4 mi	5.4%	66 ft is 16% - 29%	4.4%	145 ft is 13% - 17%	44 in	36 in	Aggregate / Gravel
Cedar Flats Trail	0.9 mi	4.4%	244 ft is 13% - 21%	3.4%	87 ft is 9% - 10%	86 in	84 in	Asphalt
Hillview Natural Trail	2.6 mi	4.8%	353 ft is 21% - 37%	3.5%	231 ft is 15% - 26%	55 in	36 in	Crushed Stone (Fines)
Hillview Paved Trail	0.2 mi	4.1%	45 ft is 9% - 14%	3.3%	392 ft is 6% - 10%	96 in	96 in	Asphalt
Yucca Natural Trail	0.9 mi	4.6%	180 ft is 15% - 39%	3.7%	150 ft is 13% - 24%	54 in	30 in	Wood Chip / Mulch
Yucca Paved Trail	0.4 mi	2.8%	46 ft is 9% - 11%	2.5%	231 ft is 6% - 8%	96 in	96 in	Asphalt
Live Oak Trail	0.1 mi	4.5%	33 ft is 11% - 15%	4.2%	65 ft is 10% - 19%	60 in	60 in	Wood Chip / Mulch