

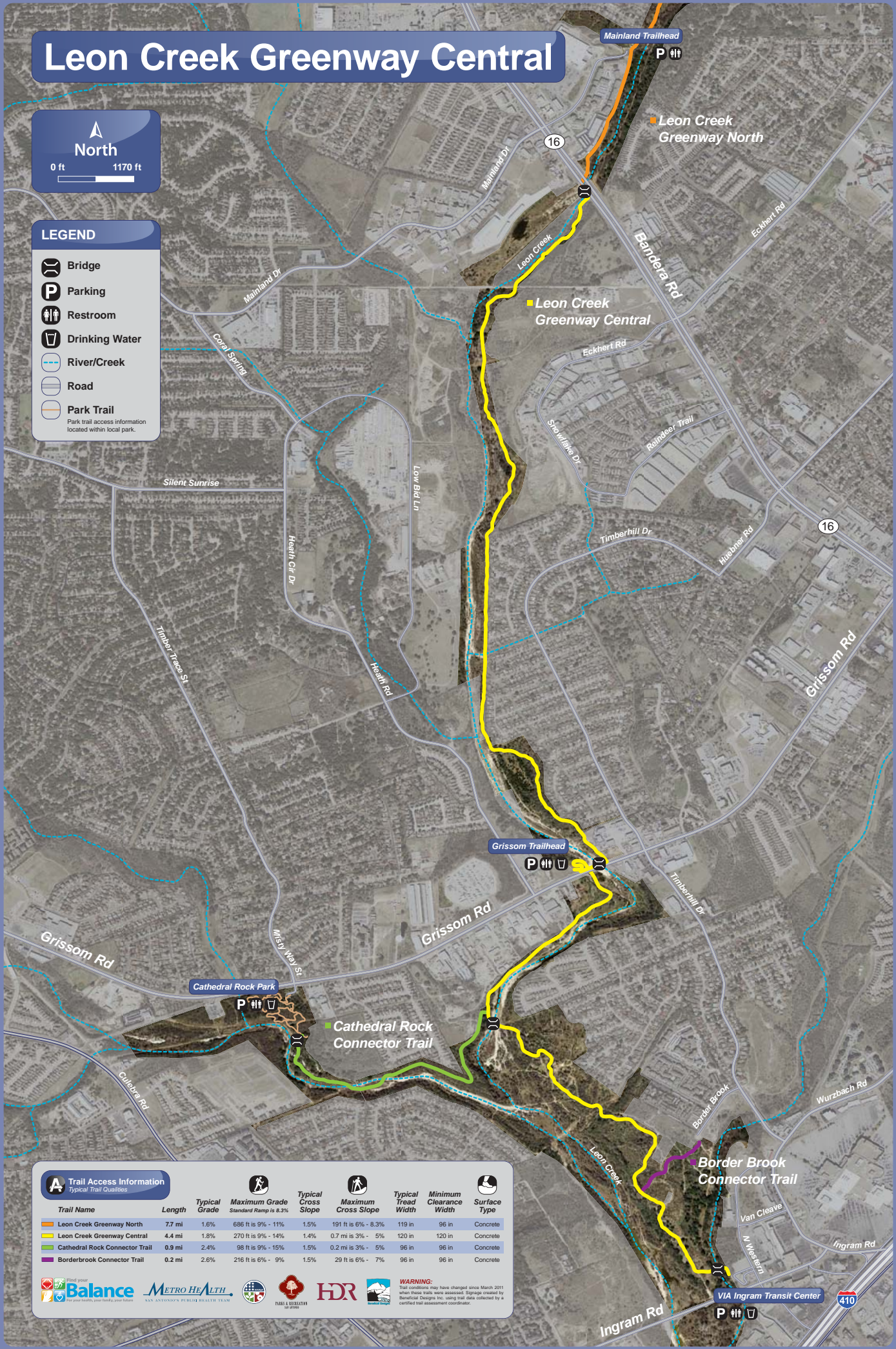
Leon Creek Greenway Central

North
0 ft 1170 ft

LEGEND

- Bridge
- Parking
- Restroom
- Drinking Water
- River/Creek
- Road
- Park Trail

Park trail access information located within local park.



Trail Access Information
Typical Trail Qualities

Trail Name	Length	Typical Grade	Maximum Grade <small>Standard Ramp is 8.3%</small>	Typical Cross Slope	Maximum Cross Slope	Typical Tread Width	Minimum Clearance Width	Surface Type
Leon Creek Greenway North	7.7 mi	1.6%	686 ft is 9% - 11%	1.5%	191 ft is 6% - 8.3%	119 in	96 in	Concrete
Leon Creek Greenway Central	4.4 mi	1.8%	270 ft is 9% - 14%	1.4%	0.7 mi is 3% - 5%	120 in	120 in	Concrete
Cathedral Rock Connector Trail	0.9 mi	2.4%	98 ft is 9% - 15%	1.5%	0.2 mi is 3% - 5%	96 in	96 in	Concrete
Borderbrook Connector Trail	0.2 mi	2.6%	216 ft is 6% - 9%	1.5%	29 ft is 6% - 7%	96 in	96 in	Concrete

WARNING: Trail conditions may have changed since March 2011 when these trails were assessed. Grades created by Beneficial Designs Inc. using trail data collected by a certified trail assessment contractor.