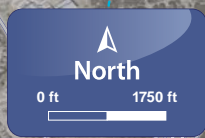
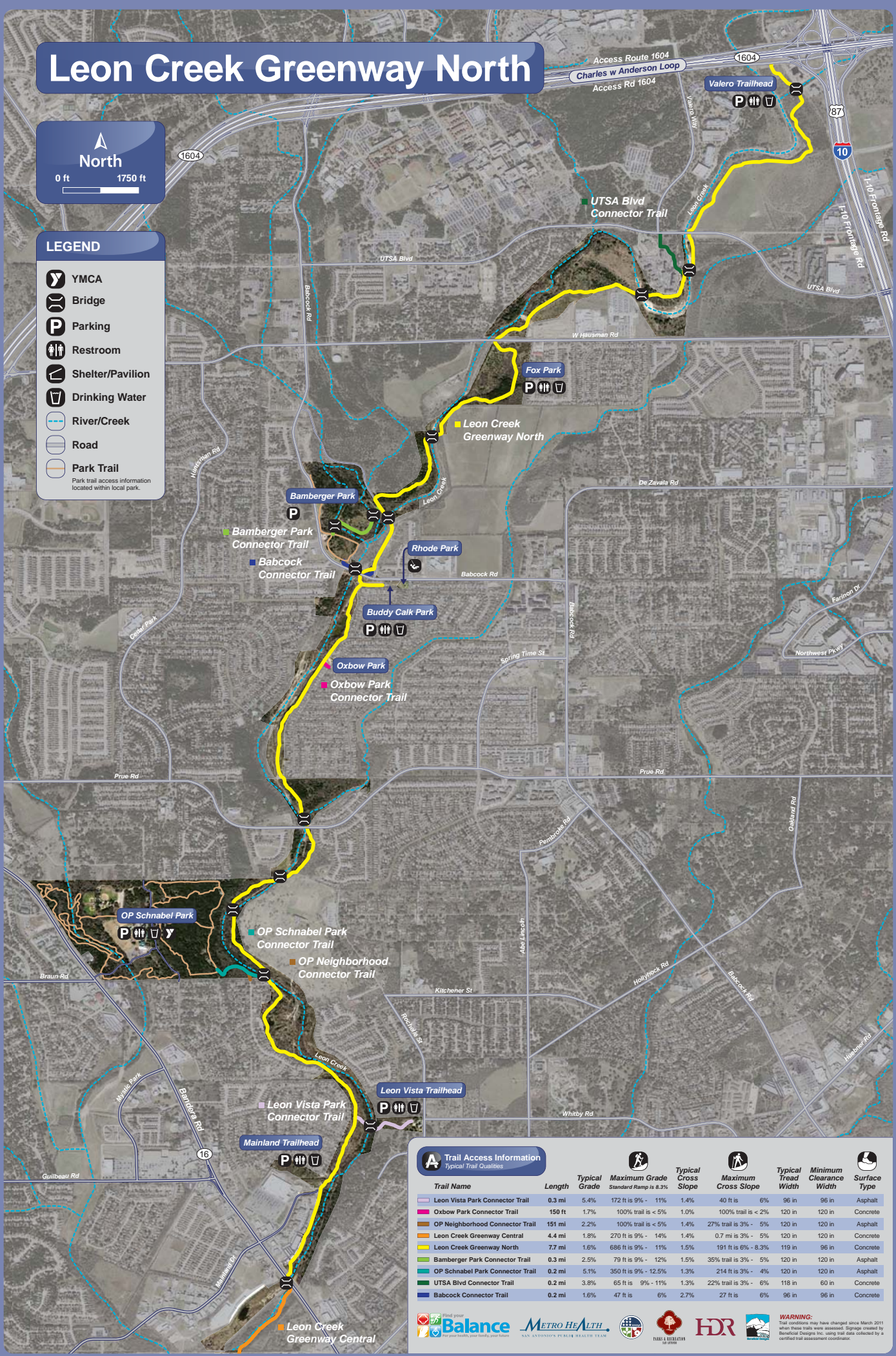


Leon Creek Greenway North



LEGEND

- YMCA
- Bridge
- Parking
- Restroom
- Shelter/Pavilion
- Drinking Water
- River/Creek
- Road
- Park Trail
Park trail access information located within local park.



Trail Access Information
Typical Trail Qualities

Trail Name	Length	Typical Grade	Maximum Grade Standard Ramp is 8.3%	Typical Cross Slope	Maximum Cross Slope	Typical Tread Width	Minimum Clearance Width	Surface Type
Leon Vista Park Connector Trail	0.3 mi	5.4%	172 ft is 9% - 11%	1.4%	40 ft is 6%	96 in	96 in	Asphalt
Oxbow Park Connector Trail	150 ft	1.7%	100% trail is < 5%	1.0%	100% trail is < 2%	120 in	120 in	Concrete
OP Neighborhood Connector Trail	151 mi	2.2%	100% trail is < 5%	1.4%	27% trail is 3% - 5%	120 in	120 in	Asphalt
Leon Creek Greenway Central	4.4 mi	1.8%	270 ft is 9% - 14%	1.4%	0.7 mi is 3% - 5%	120 in	120 in	Concrete
Leon Creek Greenway North	7.7 mi	1.6%	686 ft is 9% - 11%	1.5%	191 ft is 6% - 8.3%	119 in	96 in	Concrete
Bamberger Park Connector Trail	0.3 mi	2.5%	79 ft is 9% - 12%	1.5%	35% trail is 3% - 5%	120 in	120 in	Asphalt
OP Schnabel Park Connector Trail	0.2 mi	5.1%	350 ft is 9% - 12.5%	1.3%	214 ft is 3% - 4%	120 in	120 in	Asphalt
UTSA Blvd Connector Trail	0.2 mi	3.8%	65 ft is 9% - 11%	1.3%	22% trail is 3% - 6%	118 in	60 in	Concrete
Babcock Connector Trail	0.2 mi	1.6%	47 ft is 8%	2.7%	27 ft is 6%	96 in	96 in	Concrete