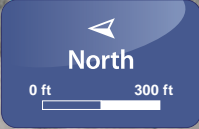
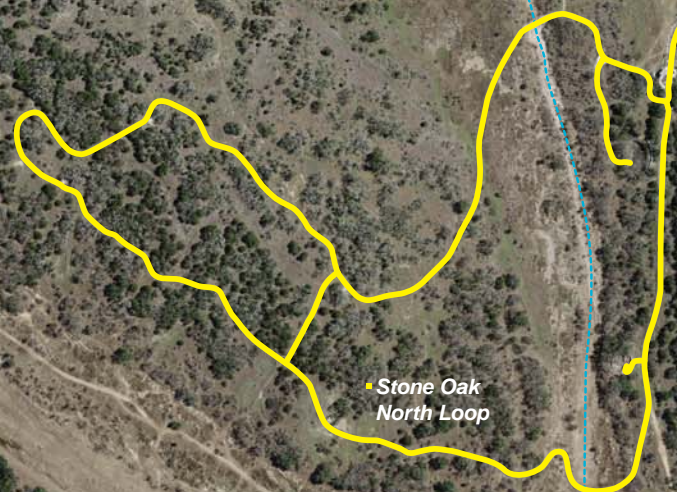


Stone Oak Park



LEGEND

- Parking
- Restroom
- Park Entrance
- Drinking Water
- Amphitheater
- Underpass
- River/Creek
- Road



Stone Oak North Loop



Stone Oak South Trail

A Trail Access Information
Typical Trail Qualities

| Trail Name | Length | Typical Grade | Maximum Grade <i>Standard Ramp is 8.3%</i> | Typical Cross Slope | Maximum Cross Slope | Typical Tread Width | Minimum Clearance Width | Surface Type |
|-----------------------|--------|---------------|---|---------------------|---------------------|---------------------|-------------------------|--------------|
| Stone Oak North Loop | 1.0 mi | 2.4% | 17 ft is 9% | 1.4% | 47 ft is 6% | 105 in | 48 in | Concrete |
| Stone Oak South Trail | 1.2 mi | 2.3% | 588 ft is 6% - 7% | 1.4% | 59 ft is 6% - 7% | 79 in | 60 in | Concrete |