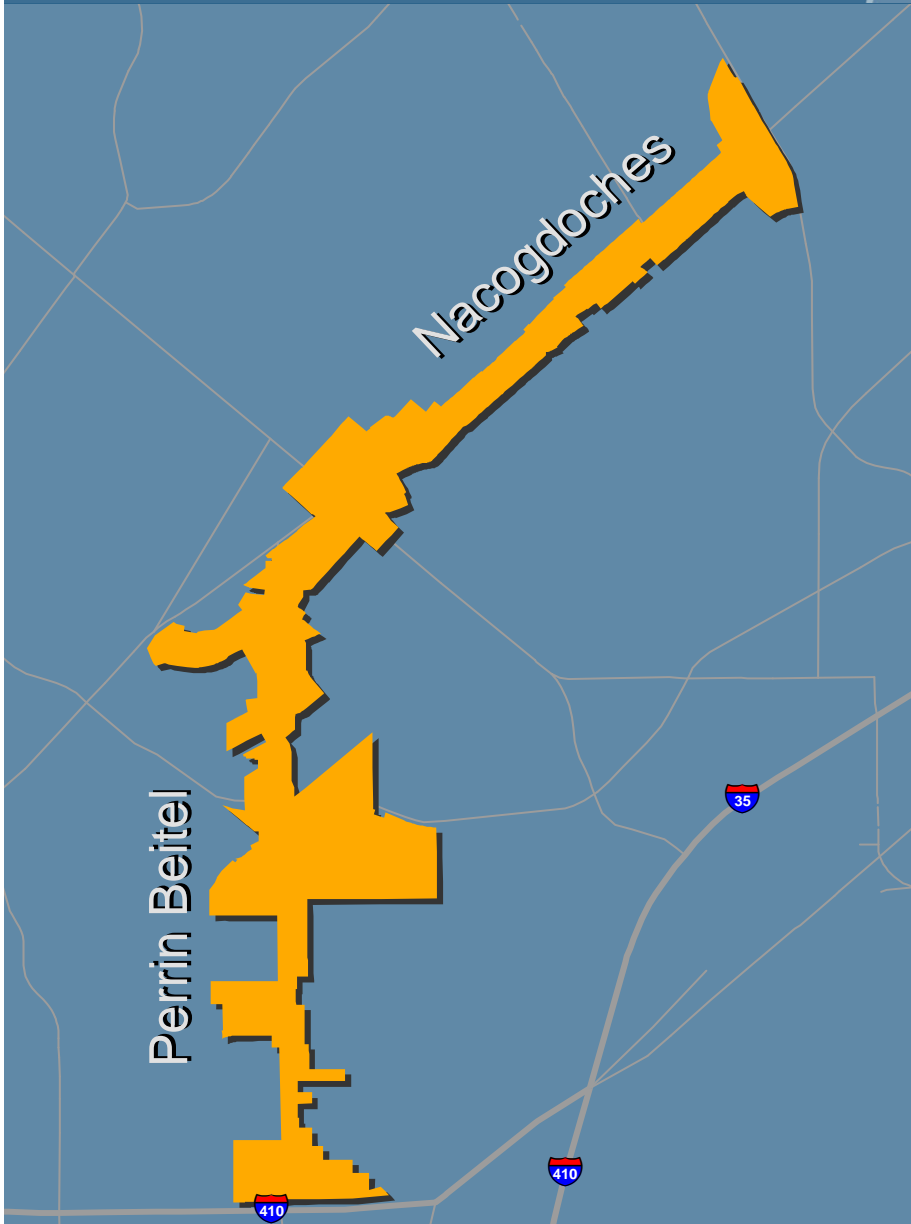


NEC



Northeast Corridor

Revitalization Plan

northeastcorridorsa.com | June 26, 2014



Prepared by the City of San Antonio
Department of Planning & Community Development

Table of Contents

OVERVIEW

Introduction & Purpose Statement4
 General Goals5

COMMUNITY ENGAGEMENT

Partners9
 Community Input.....9

AREA ASSESSMENT

Corridor Geography.....10
 Trade Area Demographics.....11
 Infrastructure12
 Transit13
 Public Space.....13
 Housing14
 Commercial.....15

STRATEGIC ACTION PLAN

Introduction & Summary Table.....19
 Strategic Actions.....20
 Organization20
 Design.....20
 Marketing24
 Business Development.....25

PROJECT FUNDING

Project Matrix26



Visit northeastcorridorsa.com
 for NEC updates

Northeast Corridor Steering Committee

The NEC Steering Committee is responsible for the planning and implementation of the Northeast Corridor Revitalization Initiative. The dedicated members of the Steering Committee represent various stakeholder groups in the community with an interest in bringing new vitality to the Perrin Beitel and Nacogdoches corridors.

Mike Gallagher	District 10 City Council Member
John Clamp	President, Northeast Neighborhood Alliance & Former District 10 City Council Member
Billy Hill	Founder & Owner, Hill Electric
Mario Hune	Chief of Staff, District 10 City Council
Jack Judson	Austin Highway Revitalization Initiative
Bud Little	President, Hills of Park North Neighborhood Association
Carlos Pena	Senior Vice President, Jefferson Bank
Carlton Soules	Former District 10 City Council Member

Staff

Staff support provided by the City of San Antonio Department of Planning & Community Development.

Michael Taylor	NEC Revitalization Manager
----------------	----------------------------

Overview

Introduction

Over the coming years, the Northeast Corridor Revitalization Initiative (NEC) will work to bring new vitality to the Perrin Beitel and Nacogdoches corridors. The Initiative will capitalize on opportunities to activate vacant and underutilized properties, re-establish community-serving retail and service businesses, and improve the appearance of buildings, signs, and parking lots. The NEC Revitalization Plan is a guiding document that articulates the new directions for the Nacogdoches and Perrin Beitel Corridors. The Plan outlines a place-based program of service delivery enhancements, tactical partnerships, and targeted investments. The Plan details the strategic investment of both public and private funds that will be essential to the revitalization of the NEC.

NEC Steering Committee

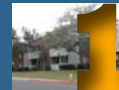
The NEC Steering Committee played a critical role in the planning of the NEC Revitalization Initiative and will facilitate the implementation of the strategies detailed in this Plan over the next 5 years. The Steering Committee was formed from the outset to lead planning and implementation efforts. The Steering Committee members represent various stakeholder groups in the community with an interest in improving the NEC.

Planning Process

The planning process used to create this document included a detailed assessment of existing conditions. A market study was completed by Wendell Davis & Associates (WDA). The market study identifies future industry and business development opportunities in the NEC based on existing and expected market conditions. The market study also includes recommendations on steps that should be taken to improve the competitive position of the NEC and its marketability to selected retail and service businesses and industries. The major findings and recommendations from the market study are summarized in this Plan.

The Plan incorporates public input and also builds on previously adopted plans and policies. WDA completed over 100 interviews with neighborhood leaders, business owners, tenants, commercial real estate brokers and other relevant persons in the

New Directions for the NEC



Reinvest in schools, apartments, and single-family neighborhoods to maintain a stable customer base.



Activate vacant and underutilized properties with large-scale, catalytic development projects.



Reintroduce native trees, shrubs, and permeable surfaces.



Improve the appearance of buildings, signs, and parking lots through incentives tied to uniform design guidelines.



Establish a unifying brand that positions the corridor for investment and communicates positive change.



Build a coalition of influential business and property owners that will advocate for funds, services, and other resources.



Recruit community-serving retail and service businesses based on a thorough knowledge of market conditions.



▲ Hill Electric repurposed a former restaurant into a state of the art headquarters (top). First Choice Emergency Room repurposed a former video store into a new emergency clinic (middle). Revitalization efforts focus on the commercial corridor and the residential trade area (bottom).

trade area as well as those familiar with the area and the real estate market. The purpose of these interviews was to gain information about the area and the real estate market including opinions of knowledgeable people on what will and won't work in the area.

The market study, overall assessment, and public input were used as the basis for developing strategies to improve conditions in the NEC. Each strategy includes a time frame for completion and planned sources and uses of funds. The Plan meets the criteria of a Community Revitalization Plan under the Texas Department of Housing and Community Affairs (TDHCA) 2013 Qualified Allocation Plan.

Goals

The NEC Revitalization Plan includes 7 major goals that are organized into 4 basic categories: Organization, Design, Marketing, and Business Development. Collectively these goals articulate a New Direction for the NEC that remakes the corridor into a more sustainable place.

ORGANIZATION

- Build a coalition of influential business and property owners that will advocate for funds, services, and other resources.

DESIGN

- Activate vacant and underutilized properties with large-scale, catalytic development projects.
- Reintroduce native trees, shrubs, and permeable surfaces.
- Improve the appearance of buildings, signs, and parking lots through incentives tied to uniform design guidelines.

MARKETING

- Establish a unifying brand that positions the corridor for investment and communicates positive change.

BUSINESS DEVELOPMENT

- Reinvest in schools, apartments, and single-family neighborhoods to maintain a stable customer base.
- Recruit community-serving retail and service businesses based on a thorough knowledge of market conditions.

Organization

Strong organization is critical to creating a revitalization effort that is sustainable over the course of many years. The organizational structure must be action focused, scalable, and adaptable to change. At the core of the organizational structure of the NEC Revitalization Initiative is the NEC Steering Committee. The Steering Committee includes representatives from the various stakeholder groups and includes business owners, residents, current and former council members, and a representative from the financial sector. The Steering Committee was integral in the development of the Revitalization Plan and will be an even

more important part of facilitating the implementation of the Plan.

The NEC Steering Committee is closely aligned with the Northeast Neighborhood Alliance (NNA). The NNA includes 85 northeast side neighborhood and homeowners associations as members. The NNA provides these neighborhood and homeowners associations with a forum for the exchange of information and a united voice that influences important program and policy decisions. The NEC Steering Committee and NNA must continue to work together to achieve outcomes that benefit the entire community.

It is anticipated that the Steering Committee will form subcommittees to deal with specific issues and needs and that these subcommittees could be spun-off into new groups and organizations. These groups could include one or more merchants associations to represent the collective interests of business owners within the corridor and a Tax Increment Reinvestment Zone (TIRZ) Board that would make decisions on how tax increment collected will be utilized to catalyze investment in the NEC. The Steering Committee will remain at the core to the Revitalization effort and provide overall direction to these supporting groups.

The following organization strategies should be employed:

1. **GROW NEC NETWORK.** Encourage strong pro-active leadership from within the Corridor business community to develop and expand a network of property owners, brokers, and agents with an interest in redeveloping the NEC.
2. **MEASURE PERFORMANCE.** Monitor, define and measure success in an annual report.

Design

Design includes a broad range of strategies that have a direct impact on the appearance and function of corridor properties and public infrastructure. The focus of the NEC Revitalization Initiative is on completing high-impact interventions to the built environment. There are strategies for shorter-term, lower-cost interventions that will signal to the community that positive change is happening in the NEC. Other strategies are for longer-term, higher-cost interventions that will catalyze the significant private investment that is needed to create a new direction for the NEC.

The following design strategies should be employed:

1. **TIRZ DESIGNATION.** Evaluate and pursue designation of a Tax Increment Reinvestment Zone (TIRZ) as a source of funding to support catalytic projects.
2. **PROPERTY REDEVELOPMENT.** Facilitate the redevelopment of key properties and prepare for reuse through acquisition and/ or public-private partnerships.
3. **LANDSCAPING.** Enhance streetscape with landscaping and public art in the public rights-of-way.



▲ Remnants of right-of-way can be transformed from an eyesore (top) to an asset (middle and bottom) with attractive, drought tolerant landscaping.



▲ Modest facade improvements at the Nacogdoches Village Shopping Center brought new regional and national tenants (before photo top, after photo middle). The rolling list of top 10 improvement opportunities includes highly visible properties such as this former Bank of America bank building (bottom).

4. **SUPPORTIVE ZONING.** Support zoning changes that are consistent with NEC revitalization goals.
5. **DESIGN GUIDELINES.** Adopt uniform site and building design guidelines for the RETAIL and MIXED USE Segments of the Corridor.
6. **DESIGN ASSISTANCE.** Provide proactive and on-demand design assistance to property owners in the Corridor.
7. **ADOPT-A-SPOT LITTER CONTROL PROGRAM.** Encourage local individuals, organizations, and businesses to adopt remaining portions of the NEC through the Keep San Antonio Beautiful Adopt-A-Spot Litter Control Program and provide support to sustain ongoing clean-up events.
8. **TOP 10 IMPROVEMENT OPPORTUNITIES.** Create and maintain rolling list of top 10 improvement opportunities.
9. **BEAUTIFICATION AWARD.** Recognize those that model pride of place with a beautification award.
10. **FACADE GRANT.** Provide matching grant for facade improvements that comply with design guidelines.
11. **NEIGHBORHOOD SIGNAGE GRANT.** Provide competitive grant for entryway signage and low maintenance landscape enhancements that is consistent with the NEC Master Landscape Plan for neighborhoods.
12. **MULTI-FAMILY REHAB PROGRAM.** Establish program to encourage owners of apartments to rehab properties and move them up-market.

Marketing

Marketing is a critical part of a revitalization initiative. The marketing campaign for the NEC will focus initially on promoting the corridor by creating a recognizable brand, improving perception of the NEC, and highlighting opportunities for relocating businesses. It is anticipated that as the organization grows over the next decade the focus of the marketing function will shift and expand to include customer-focused promotions for the NEC and individual businesses. This expanded marketing program would best be handled by a merchants association organized and led by business owners.

The following marketing strategies should be employed:

1. **PUNCH-UP MARKETING MATERIAL.** Incorporate effective marketing that will give property owners, business owners and investors the confidence the proposed redevelopment will happen.
2. **OUTREACH TO REALTORS.** Provide information on NEC to realtors via the San Antonio Board of Realtors (SABOR).
3. **NEWS ARTICLE SUBMISSIONS.** Submit web articles to San Antonio Business Journal and San Antonio Express News.

4. **COMMUNITY MEETINGS/ PRESS CONFERENCES.** Host regular public meetings/ press conferences to provide status update to stakeholders.
5. **CHAMBER OUTREACH.** Establish relationships with the area Chambers of Commerce including the Greater, North, and Hispanic to market NEC properties.

Business Development

Commercial revitalization initiatives usually include business development as a key component of the work program. The NEC Revitalization Initiative adds trade area development to the typical business development activities. This is in recognition of the fact that the businesses in a commercial corridor are dependent on the viability of the abutting residential areas where customers live (i.e. the trade area) just like the viability of the residential areas is dependent on the condition of abutting commercial areas and the availability of goods and services. A partnership with the NNA will allow for coordination and cooperation between initiatives for the commercial and residential areas.

Due to the size of the NEC and the prevalence of vacant space, the initial focus of business development efforts will be on attracting new businesses to the corridor. Business attraction efforts will focus specifically on business and industry types that have a competitive advantage in the NEC based on market conditions. It is anticipated that as the organization grows over the next decade business development efforts will expand to provide existing businesses with the technical assistance and access to capital needed to help them succeed and expand. This expanded business development program would best be handled by partnering with one of the existing chambers of commerce or the Small Business Development Center housed at the University of Texas at San Antonio.

It is important for business attraction efforts that the spending power and demand for goods and services in the abutting residential neighborhoods remain strong. However getting heavily involved with Trade Area development would generally require more resources than the NEC Revitalization Initiative could bring to bear. Fortunately, the Northeast Neighborhood Alliance (NNA) is an existing organization that is already focusing on trade area development through its work with the area neighborhood and homeowners associations. The NEC Steering Committee will support and partner with the NNA and generally work closely with this organization to ensure business development and trade area development work is aligned.

The following marketing strategies should be employed:

1. **SUPPORT NORTHEAST NEIGHBORHOOD ALLIANCE.** Support NENA to address neighborhood issues within the trade area.
2. **PROVIDE REAL ESTATE LISTINGS.** Maintain an inventory of active listings of for sale or lease properties.
3. **BUSINESS ATTRACTION.** Recruit retail, non-retail, and specialty business types from the Industry Groups recommended by market study.



▲ New businesses in the NEC include Walmart, Dunkin' Donuts, and Whataburger. The NEC Revitalization Initiative will continue to build on the momentum created by these new developments.

Community Engagement

Partners

The NEC Revitalization Initiative was launched by former District 10 Councilman Carlton Soules with staff support provided by the City of San Antonio Department of Planning and Community Development. The Steering Committee was formed soon after the initiative was launched to establish a partnership between the City of San Antonio and representatives from local businesses, financial institutions, and residents. This partnership was expanded through the community input efforts detailed in the Community Input section below. The planning process resulted in a strong partnership between the NEC Steering Committee and the Northeast Neighborhood Alliance. Many of the strategies in this document are aimed at continuing to grow the partnership network to include additional business owners and commercial property owners/ managers.

Community Input

Community members were provided multiple opportunities during the planning process to shape the Revitalization Initiative. Online surveys, 1:1 interviews, small group presentations, and large community meetings were utilized to develop new directions for the NEC and formulate the strategies included in this document. Information exchange was the goal for each of these events. Participation was robust and generally very positive.



▲ Approximately 100 neighborhood leaders, business representatives, and interested citizens attended a community meeting on February 25, 2014 to learn how the NEC Revitalization Initiative will bring new vitality to Perrin Beitel, Nacogdoches and the surrounding areas.

Area Assessment

Corridor Geography

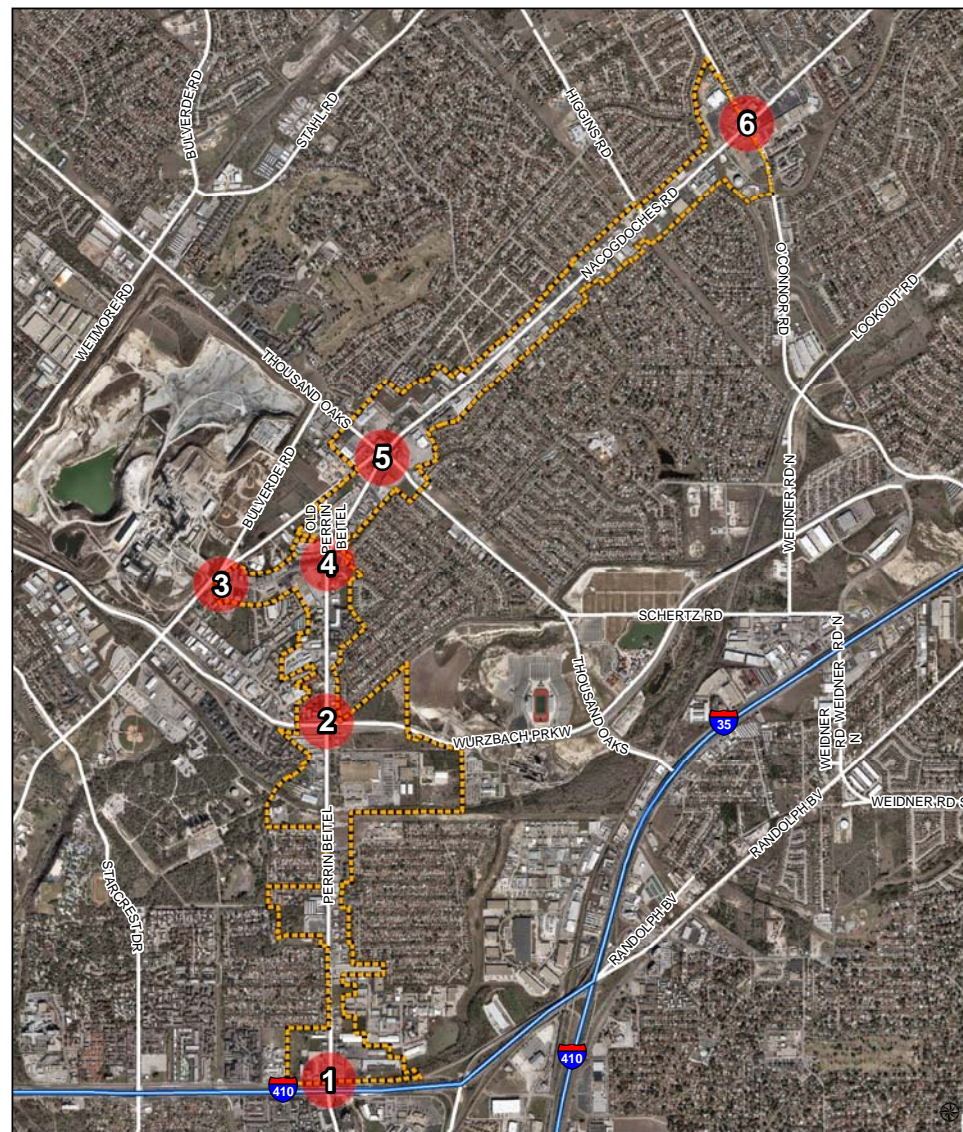
The boundaries for the NEC are shown on the map to the right. The NEC includes commercial properties along FM 2252 which is more commonly known as Perrin Beitel south of Thousand Oaks and Nacogdoches north of Thousand Oaks. The NEC also includes properties along Naco-Perrin Boulevard. There are 6 major nodes also shown on the map to the right and listed below.

NEC Corridors

- Perrin Beitel Road from Northeast Loop 410 to Thousand Oaks
- Nacogdoches Road from Thousand Oaks to O'Connor
- Naco-Perrin Boulevard

NEC Major Nodes

1. Perrin Beitel and Loop 410
2. Perrin Beitel and Wurzbach Parkway
3. Naco-Perrin and Nacogdoches
4. Perrin Beitel and Naco-Perrin
5. Perrin Beitel and Thousand Oaks and Nacogdoches
6. Nacogdoches and O'Connor



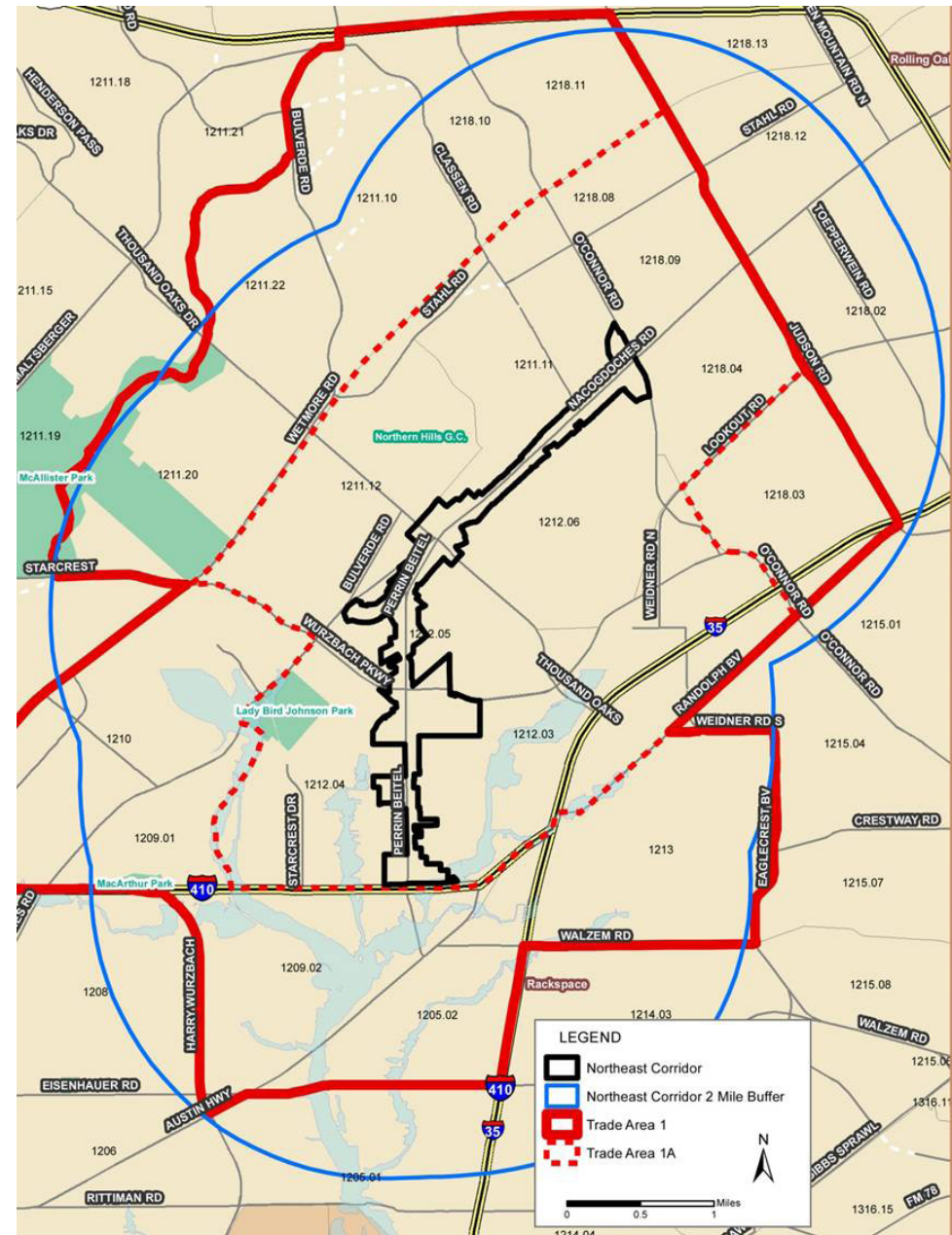
Trade Area Demographics

The NEC Market Study completed by Wendell Davis & Associates (WDA) defines a trade area for the NEC. The trade area is the contiguous geographic area within which most existing and proposed businesses in the NEC draw the majority of their customers. Based on the amount of retail space in the NEC, the locations of competing retail locations, the traffic network, and other factors it was determined that a 2-mile buffer, which does not go beyond Loop 1604 on the north, is the best representation of the NEC Trade Area. To assist with data collection and analysis, a set of 18 Census Tracts were substituted for a strict 2-mile buffer. A map of the trade area is shown on the right and selected demographic characteristics are included in the table below. The demographic characteristics of the trade area population are very important to perspective businesses. These businesses are generally looking to locate in areas in close proximity to their customers and a skilled workforce.

Population	94,392
Average Annual Population Increase (2000-2013)	745
Median Age	35.9
Average Household Size	2.52
Population with Bachelor's Degree or Higher (2013)	26%
Median Household Income	\$51,289
Average Housing Value	\$178,948
Owner Occupied Housing Units	53.4%
Renter Occupied Housing Units	38.4%
Vacant Housing Units	8.2%

▲ All data are 2013 estimates unless otherwise indicated. Source U. S. Bureau of the Census 2000, 2010; Environmental Systems Research Institute Business Analyst Online (ESRI BAO); Wendell Davis & Associates.

► The trade area is outlined in red on the map. The trade area includes 18 census tracts and extends roughly 2 miles from the NEC Corridor.

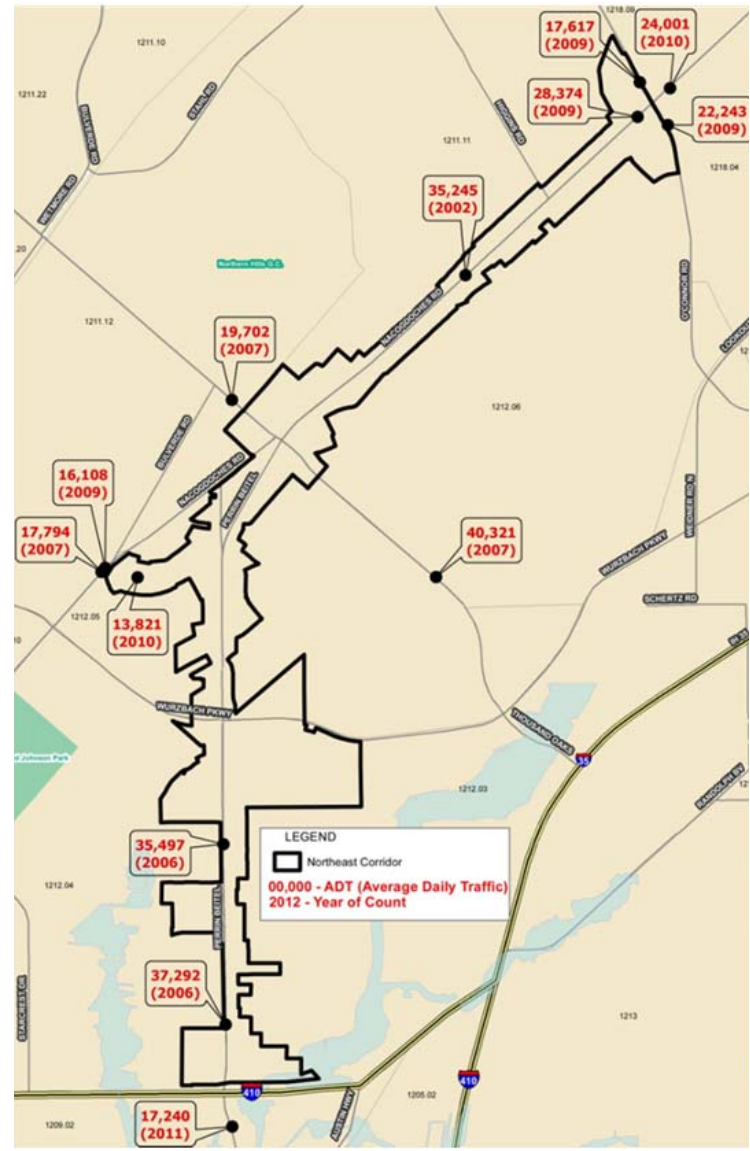
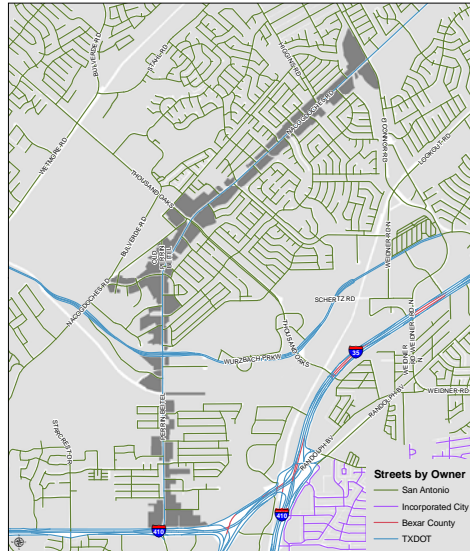
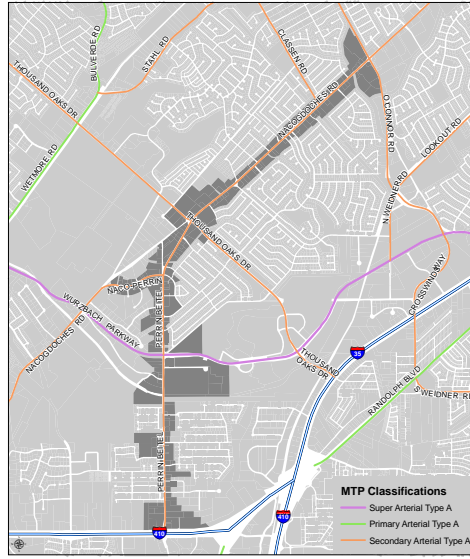


Infrastructure

Perrin Beitel and Nacogdoches are part of the state owned and maintained Farm to Market network and are designated as FM 2252 by the Texas Department of Transportation (TxDOT). Cross streets are owned and maintained by the City of San Antonio (COSA). COSA is also responsible for the installation and maintenance of the majority of traffic signals along FM 2252.

From Loop 410 to O'Connor, FM 2252 includes 2 lanes in each direction and a continuous middle turn lane. The speed limit is 45 mph. On-street parking is not permitted. There are no bicycle lanes on FM 2252. Right-of-way width varies from 100 to 120 feet. Pavement width is typically 65 feet. Sidewalk width varies from 4 to 6 feet and sidewalks are located against the curb. This type of sidewalk configuration places pedestrians directly next to vehicle traffic which many people find uncomfortable especially when traffic is travelling at 45 mph or faster.

The remaining right-of-way lies between the back of the sidewalk and the property line and varies in width from 10 to 35 feet. It is the responsibility of the abutting property owner to maintain these right of way 'remnants' which are sizable in many cases. These remnants are typically not irrigated and include a mix of grasses and weeds. Others have been paved over with asphalt or concrete. A very few owners have planted trees and shrubs and installed irrigation lines in these remnants. For the most part these remnants are only minimally maintained which contributes to the Corridor's untidy appearance. Strategy D3 provides an attractive, drought tolerant, low maintenance option to enhance these areas.



▲ Major Thoroughfares in the NEC include Perrin Beitel, Nacogdoches, Naco-Perrin, and Thousand Oaks (top left). Perrin Beitel and Nacogdoches are owned by TxDOT; cross streets are owned by the City of San Antonio (bottom left). Traffic counts along Perrin Beitel and Nacogdoches are comparable to other major corridors in the City of San Antonio (right).

Transit

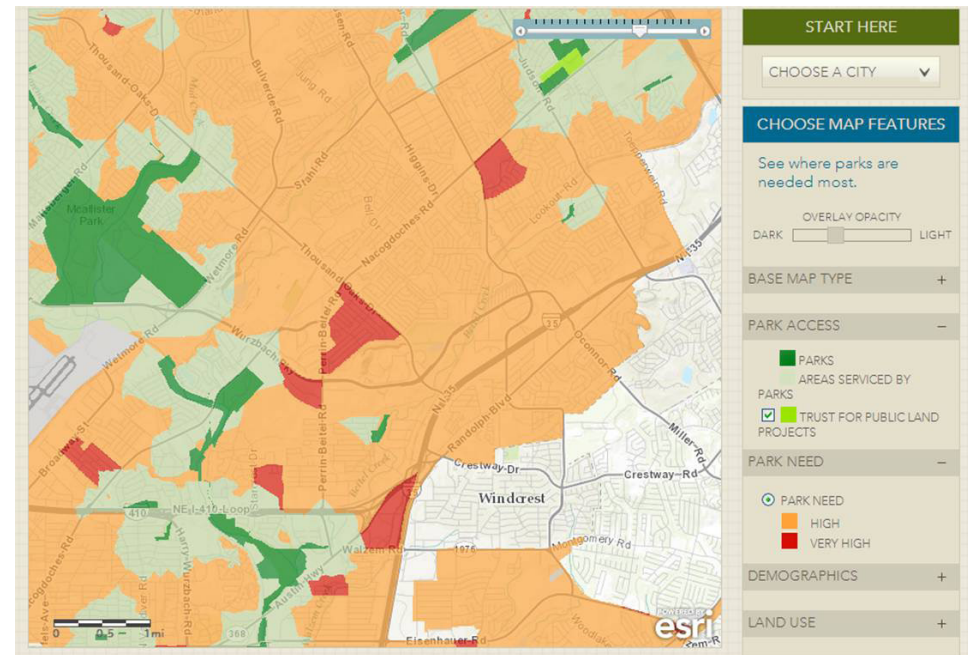
There are two main VIA bus routes that service the NEC. Route 14 provides frequent level service from the NEC to Downtown with stops in Alamo Heights and at Incarnate Word University. Route 642 provides metro level service from the NEC to Rolling Oaks Mall. These routes come together at the Naco Pass transfer area which today is a collection of stops and shelters located along the perimeter of a cul-de-sac surrounded by industrial uses. VIA is investigating the feasibility of replacing this informal transfer area with a permanent transit center that includes an enclosed waiting area with rest rooms, vending machines, staff to assist riders, and limited parking¹.

VIA's Long Range Comprehensive Transportation Plan calls for adding Bus Rapid Transit (BRT) service on Perrin Beitel. The Northeast/ Southeast BRT route would start at a new Naco Pass Transit Center, travel down Perrin Beitel and Austin Highway, through Downtown, down Roosevelt Avenue and terminate on Military Drive. BRT provides fixed rail type service by using larger, articulated buses, stations with level boarding heights, dedicated travel lanes and traffic signal prioritization². BRT can act as a catalyst for denser, transit-oriented, mixed-use development along the route and especially near transit centers. Transit oriented development would provide a way to add the additional residential units needed to support commercial establishments in the NEC while minimizing the impact on adjacent single-family neighborhoods.

Public Space

The NEC lacks publicly accessible park space. According to ParkScore, a comprehensive assessment of park space in the 50 largest US cities created by the Trust for Public Land, there is a high to very high park need for most parts of the NEC³. In addition to providing recreational opportunities for residents, parks have a positive impact on adjacent property values and can help revitalize a community.

1 viainfo.net
 2 smartwaysa.com
 3 <http://parkscore.tpl.org/>



▲ ParkScore by the Trust for Public Land identifies gaps in park availability (>10 minute walk), then determines which gaps represent the most urgent need for parkland based on population density, age, and income. The NEC includes areas with a high park need (shown in orange) and areas with a very high park need (shown in red).

A park or green in a commercial corridor can serve as a focal point and gathering spot for festivals and other events that will draw customers from other parts of the City. Strategy D2 identifies a potential site within the NEC for a new park. Other sites would also be considered.

Housing

The trade area includes mostly owner-occupied, single-family housing units that are in average condition or above with values that are affordable for middle class families. The housing section includes a description of housing value, ownership status, and housing condition.

Housing Value

Average housing value in the trade area is \$178,948. The average housing value for the trade area is slightly below that of the City (\$183,506) and the County (\$199,793). The majority of the housing units in the trade area are valued between \$150,000 and \$299,999.

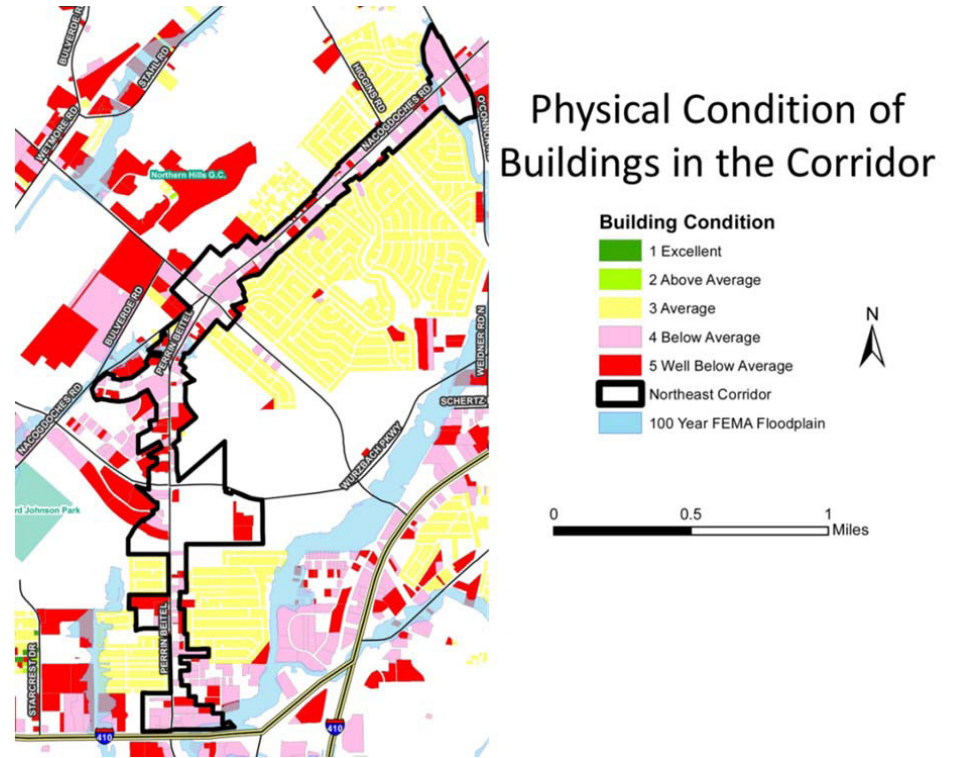
Ownership Status

Over 53% of housing units in the trade area are owner occupied. This is slightly higher than the City's percentage (51.1%). The percentage of owner occupied units within the trade area is expected to increase slightly by 2018. This slight increase in the rate of home ownership is expected in the greater City as well.

Approximately 16% of the housing units in the trade area are owner-occupied and owned free and clear.

Housing Condition

A very high 99.7% of single family homes are average condition or above. Of these, almost 17% are in above average or excellent condition. This is in stark contrast to the commercial buildings in the trade area, of which 98.3% are in below average condition.



▲ A very high 99.7% of single family homes are average condition or above. This is in stark contrast to the commercial buildings in the trade area, of which 98.3% are in below average condition.

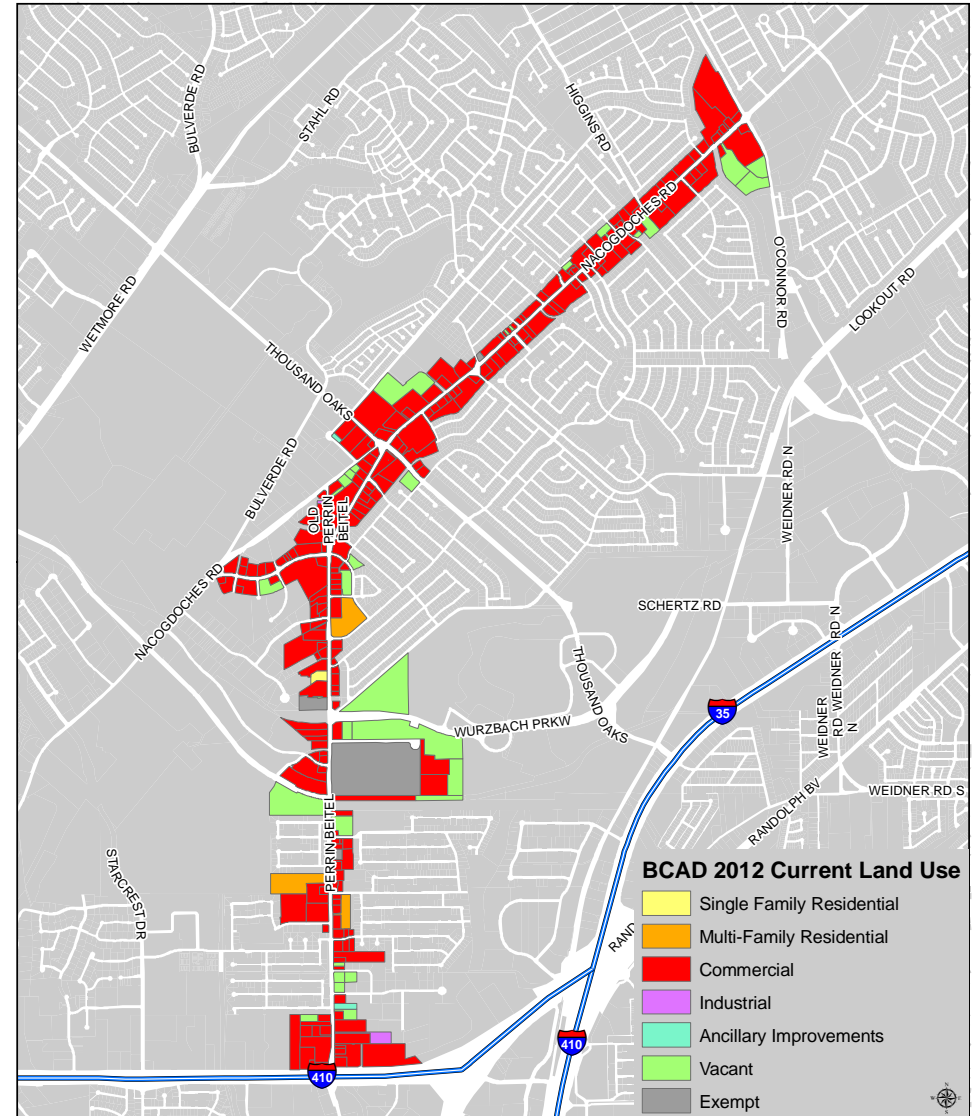
Commercial

There are 557 acres of land (nearly 1 square mile) within the NEC subdivided into 304 parcels. The total appraised property value in the Corridor was \$207 Million in 2012. The following section provides background information on the commercial areas that constitute the majority of the area within the NEC. This section includes descriptions of land use, commercial building condition, and vacant space. The results of a leakage/ surplus analysis are also included. Recent investments are also highlighted.

Existing Land Use & Zoning

Over the years, land in the NEC has been developed almost exclusively for commercial use. Over 93% of the developed acreage is utilized for commercial uses. Less than 6% of the developed acreage is utilized for multi-family housing. Commercial uses are situated in hundreds of small strip centers spread over miles (i.e. the classic strip commercial corridor). This type of development pattern that was constructed across the country in the 1970s and 1980s has fared poorly as retailers and customers have increasingly shown a preference for large power centers and denser mixed-use developments that are located in nodes at major intersections. Strategies D4 and D5 provide the initial steps for establishing a better balance of commercial and residential uses and concentrating commercial uses at major nodes.

Zoning in the Northeast Corridor is mostly consistent with the existing land use. Over 70% of the land area is zoned for commercial uses. Industrial and Light Industrial zoning covers 25% of land in the Corridor, and multi-family residential zoning is 3.1% of the land. Based on the comparison of zoning and land use within the Corridor, it appears the Corridor includes too much Industrial zoning and not enough multi-family zoning. Additionally, the amount of heavy commercial zoning should be decreased and concentrated at the major nodes. Mixed-use and multi-family zoning should be added to portions of the corridor that are not at major nodes.



▲ Current land use in the NEC is dominated by commercial and vacant categories. There are a few multi-family complexes within the Corridor. Single-family neighborhoods are located adjacent to the Corridor.

Commercial Building Condition

A very high 98.3% of commercial buildings in the NEC Trade Area are in below average or well below average condition. High value tenants are rarely willing to lease spaces in buildings that are in poor condition even with promises of upgrades. The condition of some of these buildings could be improved with a modest investment. The recent investment at Nacogdoches Village is an example of a shopping center that attracted new regional and national tenants after improvements were made to the facades of the buildings. Other buildings are obsolete and should be demolished to make way for new buildings that better meet the space and amenity demands of today's tenants.

Vacant Buildings and Lots

There are over 100 acres of vacant land in the NEC. Much of this total is included in a handful of large, bypassed parcels shown on the map on page 14. This vacant land provides opportunities for large, transformative developments. Incentives will likely be necessary to overcome access, drainage, legal or other issues that are responsible for these parcels remaining vacant while surrounding parcels were developed.

In addition to vacant land, there is over 400,000 square feet of vacant building space within the NEC. The overall vacancy rate is 13.5%. The vacancy rate is not excessively high, however, much of the vacant space is found in a handful of highly visible derelict properties. These eyesores make the vacancy rate seem like a bigger problem than it actually is. Of the vacant space, over half is configured for retail use. The remaining space is configured for industrial, office, or assembly use. These vacant spaces may need to be adapted to a different type of use in order in order for them to be re-occupied. Incentives will likely be necessary to help property owners fund reconfiguring these spaces.

Retail Market Gap Analysis (Leakage/ Surplus Analysis)

The Trade Area retail market in 2012 had more than \$970 million in retail trade, food & drink sales through 804 establishments. A Retail Market Gap Analysis, or Leakage/ Surplus Analysis compares the spending of households within a trade area to the sales of retail establishments within the same trade area to determine

Inventory Summary of Land and Building Space for Separate Nacogdoches and Perrin Beitel Segments

Parcel Use	Nbr	Land Area	Available Space	Building Area	Occ Rate	Vac Rate
<u>Nacogdoches Retail Segment</u>						
Retail Total	298	163.55	186,669	1,259,165	85.2%	14.8%
Residential Total	4	8.28	n/a	n/a	n/a	n/a
Non-Retail Total	130	93.55	96,084	771,986	87.6%	12.4%
Any Use	24	22.60	4,978	4,978	0.0%	100.0%
Retail Corridor Total	456	287.98	287,731	2,036,129	85.9%	14.1%
<u>Perrin Beitel Mixed Use Segment</u>						
Retail Total	97	44.42	23,603	371,922	93.7%	6.3%
Residential Total	6	27.83	n/a	n/a	n/a	n/a
Non-Retail Total	70	119.22	18,506	539,749	96.6%	3.4%
Any Use	26	84.25	78,791	78,791	0.0%	100.0%
Mixed Use Corridor Total	199	275.72	120,900	990,462	87.8%	12.2%
<u>NORTHEAST CORRIDOR</u>						
Retail Total	395	207.97	210,272	1,631,087	87.1%	12.9%
Residential Total	10	36.11	n/a	n/a	n/a	n/a
Non-Retail Total	200	212.77	114,590	1,311,735	91.3%	8.7%
Any Use	50	106.85	83,769	83,769	0.0%	100.0%
Northeast Corridor Total	655	563.70	408,631	3,026,591	86.5%	13.5%

Note: Available space and building area totals do not include residential floor space, land area is included.

Industry Summary	Industry Group	Demand (Retail Potential)	Supply (Retail Sales)	Leakage Retail Gap	Leakage Factor	Nbr of Estabs
Other Gen Mdse Stores	4529	\$97,811,648	\$2,752,901	\$95,058,747	94.5	6
Department Stores	4521	\$55,972,667	\$2,508,340	\$53,464,327	91.4	3
Ltd-Service Eating Places	7222	\$49,395,513	\$39,931,762	\$9,463,752	10.6	36
Clothing Stores	4481	\$38,760,054	\$7,722,191	\$31,037,863	66.8	35
Jewelry/Luggage/Leather	4483	\$7,893,038	\$5,186,997	\$2,706,041	20.7	27
Shoe Stores	4482	\$6,536,451	\$955,766	\$5,580,685	74.5	4
Book, Periodicals & Music	4512	\$5,501,054	\$889,724	\$4,611,330	72.2	14
Lawn & Garden	4442	\$3,042,879	\$1,284,050	\$1,758,829	40.6	3
Total Leakage		\$264,913,304	\$61,231,731	\$203,681,573		128

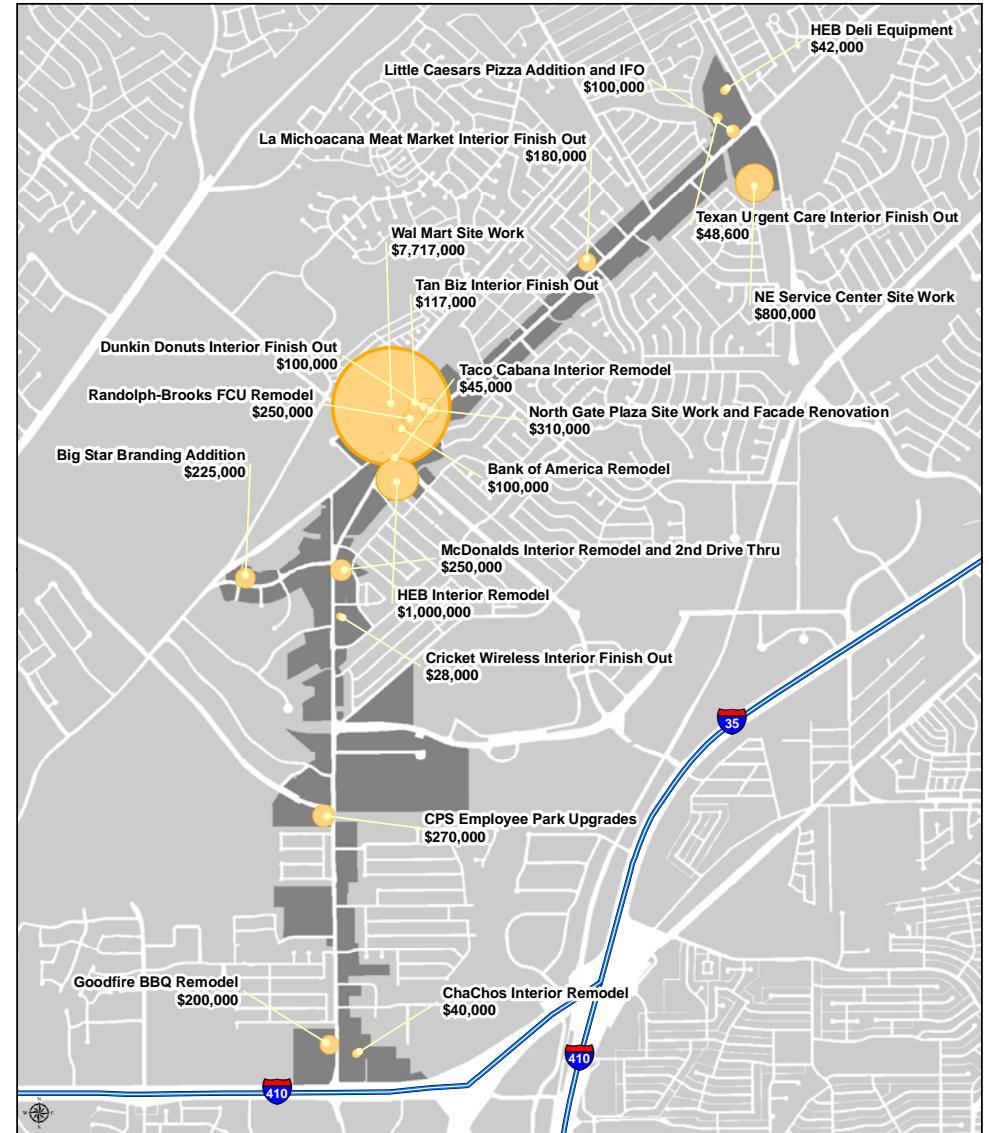
▲ There are over 100 acres of vacant land and 400,000 square feet of vacant building space in the NEC (top). There is over \$200 million in leakage in 8 major industry groups in the NEC trade area (bottom).

retail synergy, and growth plans are aligned with conditions in the NEC.

The total leakage of the top five recommended industry groups: Discount Stores, Department Stores, Apparel Stores, Shoes & Accessories Stores and Book, Periodical and Music Stores is \$195,014,193. The estimated sales of the recommended retailers totals \$99,836,119, including an estimate for Walmart of \$55,147,500. This represents about 1/2 of the total leakage, assuming the Corridor will not capture all the leakage due to strong competition from the Forum and other centers not far away, as well as leakage to internet sales.

Recent Investment

Investment in the NEC has increased over the past few years since Walmart announced plans to build a new store at the northwest corner of Perrin Beitel/ Nacogdoches and Thousand Oaks. There were nearly \$12 million in permitted construction projects from Jan 2012 to Apr 2013. \$9.7 million (82%) of these projects are located at the intersection of Perrin Beitel, Nacogdoches and Thousand Oaks. The map on the following page shows the individual investments in the corridor.



Strategic Action Plan

The market study, overall assessment, and public input were used as the basis for developing 22 strategies to improve conditions in the NEC. The strategies are organized into 4 basic categories: Organization, Design, Marketing, and Business Development. Details on all strategies are provided on subsequent pages.

Strategy	Category	Page	2014	2015	2016	2017	2018	Dependent on TIRZ*
O1	Grow NEC Network	Organization	20	■	■	■	■	■
O2	Measure Performance	Organization	21	■	■	■	■	■
D1	TIRZ Designation	Design	21	■			■	
D2	Property Redevelopment	Design	21				■	■
D3	Landscaping	Design	21	■	■		■	■
D4	Support Zoning Changes	Design	22	■	■	■	■	■
D5	Design Guidelines	Design	22		■			
D6	Design Assistance	Design	22		■	■	■	■
D7	NEC Adopt-A-Spot Litter Control Program	Design	22	■	■	■	■	■
D8	Top 10 Improvement Opportunities	Design	23	■	■	■	■	■
D9	Beautification Award	Design	23	■	■	■	■	■
D10	Facade Grant	Design	23			■	■	■
D11	Neighborhood Signage Grant	Design	23				■	■
D12	Multi-Family Rehab Program	Design	23	■	■			■
M1	Enhance Marketing Material	Marketing	24	■				
M2	Outreach to Realtors	Marketing	24	■	■	■	■	■
M3	News Article Submissions	Marketing	24	■	■	■	■	■
M4	Community Meetings/ Press Conferences	Marketing	24	■	■	■	■	■
M5	Chamber Outreach	Marketing	24	■	■	■	■	■
B1	Support Northeast Neighborhood Alliance	Business Development	25	■	■	■	■	■
B2	Provide Real Estate Listings	Business Development	25	■	■	■	■	■
B3	Business Attraction	Business Development	25	■	■	■	■	■

*These strategies are dependent on TIRZ or other source of dedicated revenue.

Organization

O1. GROW NEC NETWORK

Encourage strong pro-active leadership from within the NEC business community to develop and expand a network of property owners, brokers, and agents with an interest in redeveloping the NEC.

- Initiate and maintain contact with NEC stakeholders through mail-outs, website, e-blasts, and other communication tools.
- Support the organization of a merchant's association to address the specific needs of business owners.
- Form working groups to deal with specific issues and needs.

O2. MEASURE PERFORMANCE

Monitor, define and measure success in an annual report.



Design

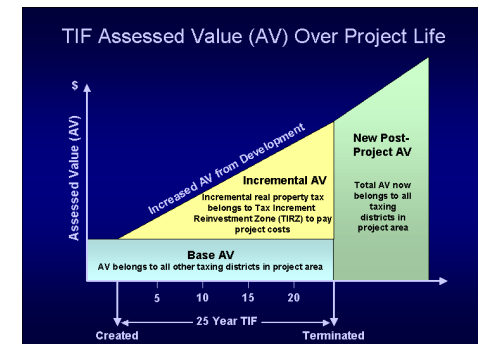
D1. TIRZ DESIGNATION

Evaluate the feasibility of using Tax Increment Financing (TIF) as a source of funding to incentivize catalytic projects. Pursue designation of a Tax Increment Reinvestment Zone (TIRZ) if deemed feasible. Consider providing TIRZ with borrowing powers to take advantage of revenue from major known projects. Add the following properties to the Corridor if creating TIRZ:

- Sky Mine on old Bulverde Rd
- Vacant land between Bulverde Rd and Old Nacogdoches Rd

▲ Students from the UTSA School of Architecture redesigned the facades of existing buildings in the NEC. The students were given a maximum budget of \$50,000. Facade improvements like the one shown could be partially funded through a matching grant program funded by a TIRZ.

► TIF is a special funding tool that can promote public and private investment in areas where little to no investment is currently taking place. TIF is a way to fund improvements without increasing taxes or levying an assessment.



D2. PROPERTY REDEVELOPMENT

Facilitate the redevelopment the following properties and prepare for reuse through acquisition and/ or public-private partnerships as recommended by market study.

1. Perrin Oaks Plaza shopping center.
2. Bank structure that is for lease only but restricted from use as a financial institution.
3. Fire-gutted building (formerly Playmates) on the northwest of Wye Dr and Perrin-Beitel.
4. Properties at 9834 Perrin Beitel for use as a public park. This site is centrally located, has Perrin Beitel frontage, and abuts Clear Springs Elementary.
5. Commerce Business Park. Relocate existing businesses to other locations and redevelop to achieve a higher aesthetic quality at the Wurzbach Parkway gateway to the NEC.

D3. LANDSCAPING

Enhance streetscape with landscaping and public art in the public rights-of-way.

- Commission NEC Master Landscape Plan that features corridor-wide design that is attractive, drought tolerant, and low maintenance.
- Amend TxDOT master landscape ordinance to include additional areas in the NEC.
- Execute agreement for initial watering and ongoing maintenance.
- Install landscaping at high impact areas including A) Thousand Oaks/ Perrin Beitel/ Nacogdoches Triangle and B) Perrin Beitel/ Wurzbach Parkway.
- Commission public art installation in landscape areas or under overpasses.
- Encourage private property owners to improve landscaping in accordance with corridor-wide design.



D4. SUPPORT ZONING CHANGES

Support zoning changes that are consistent with NEC revitalization goals including decreasing the amount of heavy commercial zoning and concentrating it at the major nodes and adding low density mixed-use and multi-family zoning to portions of the corridor that are not at major nodes.

D5. DESIGN GUIDELINES

Adopt uniform site and building design guidelines for the NEC that include recommendations regarding:

- Landscaping on private property that is consistent with right-of-way plantings
- New pad sites in front of existing shopping centers
- Signs
- Cross-access easements to eliminate curb cuts
- Gathering spaces
- Pedestrian enhancements & access to neighborhoods
- Other improvements that could be implemented with TIRZ funds
- A walkable urban village around the intersection of Thousand Oaks/ Perrin Beitel/ Nacogdoches

D6. DESIGN ASSISTANCE

Provide proactive and on-demand design assistance to property owners in the NEC. Provide renderings to illustrate what facades could look like when applying the design guidelines.

D7. NEC ADOPT-A-SPOT LITTER CONTROL PROGRAM

Encourage local individuals, organizations, and businesses to adopt remaining portions of the NEC through the Keep San Antonio Beautiful Adopt-A-Spot Litter Control Program. Provide support to sustain ongoing clean-up events.



▲ Guidelines for site and building design typically address commercial center retrofits, landscaping, signs, building materials. Guidelines would be mandatory for projects receiving incentives through an NEC incentive program.

D8. TOP 10 IMPROVEMENT OPPORTUNITIES

Create and maintain rolling list of top 10 'improvement opportunities.' Develop and pursue intervention strategy for each site.



D9. BEAUTIFICATION AWARD

Recognize those that model pride of place with a beautification award.

- Design and print custom signs with NEC logo.
- Administer under the existing Northeast Neighborhood Alliance beautification award program.
- Place yard sign on property and post article on website.

D10. FACADE GRANT

Provide matching grant for commercial facade improvements that comply with NEC design guidelines.



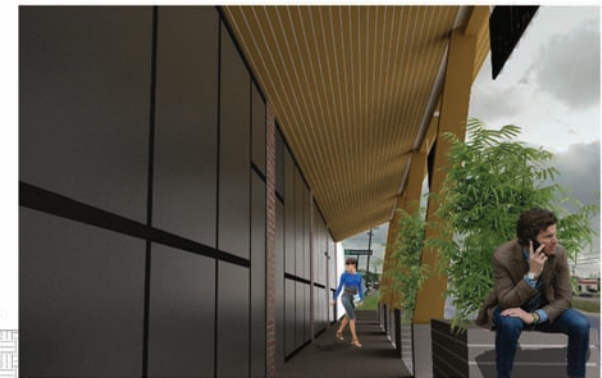
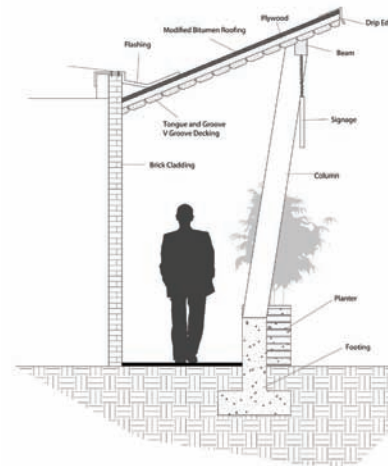
D11. NEIGHBORHOOD SIGNAGE GRANT

Provide competitive grant for neighborhood entryway signage and low maintenance landscape enhancements that are consistent with the NEC Design Guidelines and Master Landscape Plan.

D12. MULTI-FAMILY REHAB PROGRAM

Establish program to encourage owners of apartments to rehab properties and move them up-market. Consider incentives using future TIRZ funds.

► Students from the UTSA School of Architecture redesigned the facades of existing buildings in the NEC. The students were given a maximum budget of \$50,000. Facade improvements like the one shown could be partially funded through a matching grant program funded by a TIRZ.



Marketing

M1. ENHANCE MARKETING MATERIAL

Incorporate effective marketing that will give property owners, business owners and investors the confidence the proposed redevelopment will happen.

M2. OUTREACH TO REALTORS

Provide information on NEC to realtors via the San Antonio Board of Realtors (SABOR).

M3. NEWS ARTICLE SUBMISSIONS

Post articles to highlight positive changes in the NEC including new businesses, significant investments, and upcoming events. Submit the best articles to the San Antonio Business Journal and San Antonio Express News.

M4. COMMUNITY MEETINGS/ PRESS CONFERENCES

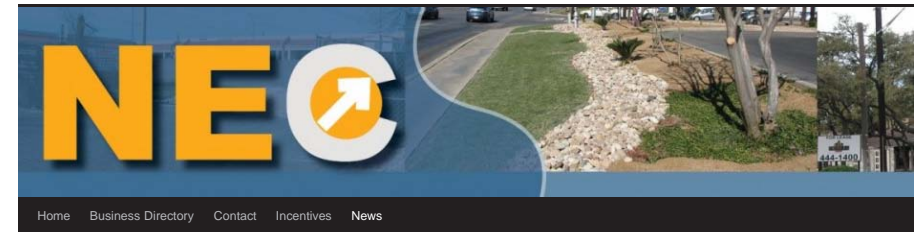
Host regular public meetings to provide status updates to community members. Highlight ground breaking and grand opening celebrations with press conferences.

M5. CHAMBER OUTREACH

Establish relationships with the area Chambers of Commerce including the Greater, North, and Hispanic to help market the NEC to new and relocating businesses.

► Marketing for the NEC will focus initially on promoting the corridor by creating a recognizable brand, improving perception, and highlighting opportunities for relocating businesses. As the organization grows over the next decade the focus of the marketing function will shift and expand to include customer-focused promotions for the NEC and individual businesses.

Northeast Corridor Revitalization Initiative perrin bettel | nacogdoches



News

New Dunkin' Donuts debuts in Northeast San Antonio

San Antonio Business Journal, Tricia Lynn Silva



Dunkin' Donuts is rolling out a new store on Tuesday, July 23 in San Antonio.

The store is located at 12311 Nacogdoches Road on the Northeast Side. The grand-opening festivities will take place at noon.

Follow Blog via Email
Enter your email address to follow this blog and receive notifications of new posts by email.

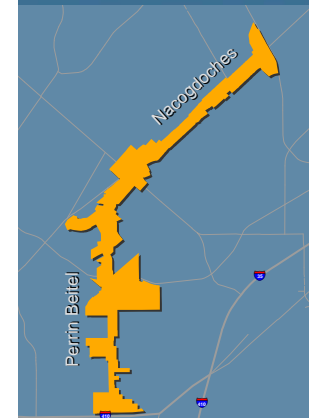
Subscribe

Blogroll

- [Planning & Community Development](#)

Recent Posts

- [Welcome!](#) April 12, 2013



Restore vitality to the **Perrin Beitel** and **Nacogdoches** corridors.

Capitalize on opportunities to **activate** vacant and underutilized properties, **re-establish** community-serving retail and service businesses, and **improve** the appearance of buildings, signs, and parking lots.

A place-based program of **service** delivery enhancements, tactical **partnerships**, and targeted **investments**.

Incentives are available to help you improve your commercial property. Visit northeastcorridorsa.com for more information.

Northeast Corridor Revitalization Initiative

Business Development

B1. SUPPORT NORTHEAST NEIGHBORHOOD ALLIANCE

Support NENA on the following issues and others that arise.

- Facilitate turn over of vacant houses in single-family neighborhoods
- Strengthen neighborhood associations
- Minimize negative impact of vacant lots in residential areas
- Code enforcement

B2. PROVIDE REAL ESTATE LISTINGS

Maintain an inventory of active listings of properties that are for sale or lease. Provide a map of locations and lease rates and/ or asking prices as available. Post to website.

B3. BUSINESS ATTRACTION

Recruit businesses from the following Industry Groups as recommended by market study:

RETAIL

- General Merchandise Stores, including Discount Stores
- Department Stores
- Apparel Stores
- Shoe Stores
- Book, Periodical & Music Stores

NON-RETAIL

- Multi-Family - First priority is to assist and facilitate the rehabilitation and/ or replacement of existing multi-family units. Second priority is to support new multi-family units near proposed Bus Rapid Transit (BRT) stations or as part of redevelopment projects that eliminate blight. See market study for potential sites.
- Call centers
- Alamo Colleges/ Technical School/ Trade School



▲ There is nearly 240,000 square feet of vacant building space and over 72 acres of vacant land in the NEC. The overall vacancy rate for building space is 13.5%. The Revitalization Initiative can help owners lease or sell vacant properties by recruiting businesses from competitive industries and providing a list of available properties to prospective buyers and lessees.

SPECIALTY

- Personal and business service (child care, laundromat, small medical clinics) and casual dining restaurants in the mixed-use segment
- Unique themed destination restaurant in an appropriate location in the Retail Segment
- Incubator for start-up businesses
- CPS Energy Service Center
- VA Clinic

Project Funding Matrix

Strategies	Time Frame/ Frequency	Lead(s)	Estimated Cost	Funding Source
ORGANIZATION				
O1 GROW NEC NETWORK Encourage strong pro-active leadership from within the Corridor Business Community to develop and expand a network of property owners, brokers, and agents with an interest in redeveloping the NEC.	2014 & Ongoing/ Biannual	Steering Committee	Staff Time	COSA
O2 MEASURE PERFORMANCE Monitor, define and measure success in an annual report.	2014 & Ongoing/ Annual	Steering Committee	Staff Time	COSA
DESIGN				
D1 TIRZ DESIGNATION Evaluate and pursue designation of a Tax Increment Reinvestment Zone (TIRZ) as source of funding to support catalytic projects.	2014 - Evaluate & pursue designation (Reevaluate in 2017 if not previously designated)	Steering Committee, D10, DPCD TIF Unit	Set-up cost charged to TIRZ	COSA, TIRZ
D2 PROPERTY REDEVELOPMENT Acquire blighted properties and prepare for reuse as recommended by market study.	2018 or when TIRZ funds become available	TIRZ Board	\$45,000 - \$1.2M per property	TIRZ
D3 LANDSCAPING Enhance streetscape with landscaping and public art in the public rights-of-way Phase I Design, Funding & Agreements Phase II Installation (high impact areas) Phase III proposal including intersection improvements & public art for 2018 bond	2014 - Phase I 2015 - Phase II 2017 - Phase II	Steering Committee, D10	<u>Phase I</u> Design Installation Maintenance <u>Phase II</u> TBD	<u>Phase I</u> CCPF, TIRZ <u>Phase II</u> 2018 Bond
D4 SUPPORT ZONING CHANGES Support zoning changes that are consistent with NEC revitalization goals including decreasing the amount of heavy commercial zoning and concentrating it at the major nodes and adding low density mixed-use and multi-family zoning to portions of the corridor that are not at major nodes.	2014 & Ongoing Evaluate feasibility of pursuing comprehensive rezoning	Steering Committee, D10	Staff Time	COSA

Strategies		Time Frame/ Frequency	Lead(s)	Estimated Cost	Funding Source
D5	<p>DESIGN GUIDELINES Adopt uniform site and building design guidelines for the NEC.</p>	<p>2015</p> <p>2019+ Pursue designation of urban design zoning overlay district</p>	<p>Steering Committee, D10</p> <p>UTSA School of Architecture</p>	<p>\$5,000 (exhibits, outreach)</p>	COSA
D6	<p>DESIGN ASSISTANCE Provide proactive and on-demand design assistance to property owners in the Corridor.</p>	<p>2015 & Ongoing</p>	<p>City Design Center</p> <p>UTSA School of Architecture</p>	<p>Staff Time</p>	COSA
D7	<p>NEC ADOPT-A-SPOT LITTER CONTROL PROGRAM Encourage local individuals, organizations, and businesses to adopt remaining portions of the NEC through the Keep San Antonio Beautiful Adopt-A-Spot Litter Control Program and provide support to sustain ongoing clean-up events.</p>	<p>2014 & Ongoing/ Annual</p>	<p>Steering Committee, D10, NENA</p> <p>Keep SA Beautiful</p>	<p>Check w/KSAB</p>	CCPF
D8	<p>TOP 10 IMPROVEMENT OPPORTUNITIES Create and maintain rolling list of top 10 'improvement opportunities.'</p>	<p>2014 & Ongoing/ Update Biannually</p>	<p>Steering Committee</p>	<p>Staff Time</p>	COSA
D9	<p>BEAUTIFICATION AWARD Recognize those that model pride of place with a beautification award</p>	<p>2014 & Ongoing/ Bi-annual (as warranted)</p>	<p>Steering Committee, NENA</p>	<p>\$1,000</p>	CCPF
D10	<p>FACADE GRANT Provide matching grant for facade improvements that comply with design guidelines.</p>	<p>2016 - design program</p> <p>2016 & Ongoing - Implement Program</p>	<p>TIRZ Board</p>	<p>Minimum \$25,000 per project but scalable depending on TIRZ revenue</p>	TIRZ
D11	<p>NEIGHBORHOOD SIGNAGE GRANT Provide competitive grant for entryway signage and low maintenance landscape enhancements that is consistent with the NEC Master Landscape Plan for neighborhoods.</p>	<p>2018 & Ongoing</p>	<p>TIRZ Board</p>	<p>Minimum \$10,000 per grant but scalable depending on TIRZ revenue</p>	TIRZ
D12	<p>MULTI-FAMILY REHAB PROGRAM Establish program to encourage owners of apartments to rehab properties and move them up-market.</p>	<p>2014, 2015 - Work with apartment association to develop incentive program</p>	<p>Steering Committee, NENA</p>	<p>TBD</p>	COSA

Strategies	Time Frame/ Frequency	Lead(s)	Estimated Cost	Funding Source
MARKETING				
M1 ENHANCE MARKETING MATERIAL Incorporate effective marketing that will give property owners, business owners and investors the confidence the proposed redevelopment will happen.	2014	Steering Committee	\$5,000	CCPF
M2 OUTREACH TO REALTORS Provide information on NEC to realtors via the San Antonio Board of Realtors (SABOR).	2014 & Ongoing	Steering Committee	Staff Time	COSA
M3 NEWS ARTICLE SUBMISSIONS Submit web articles to San Antonio Business Journal and San Antonio Express News.	2014 & Ongoing/ As warranted, at least 1 per year	Steering Committee	Staff Time	COSA
M4 COMMUNITY MEETINGS/ PRESS CONFERENCES Host regular public meetings/ press conferences to provide status update to stakeholders.	2014 & Ongoing/ Biannual presentations to NENA; press conferences as warranted	Steering Committee	Staff Time	COSA
M5 CHAMBER OUTREACH Establish relationships with the area Chambers of Commerce including the Greater, North, and Hispanic to market NEC properties.	2014 & Ongoing	Steering Committee	Staff Time	COSA
BUSINESS DEVELOPMENT				
B1 SUPPORT NORTHEAST NEIGHBORHOOD ALLIANCE Support NENA to address neighborhood issues within the trade area	2014 & Ongoing	Steering Committee	Staff Time	COSA
B2 PROVIDE REAL ESTATE LISTINGS Maintain an inventory of active listings of for sale or lease properties.	2014 & Ongoing	Steering Committee	Staff Time	COSA
B3 BUSINESS ATTRACTION Recruit retailer, non-retail, and specialty business types from the Industry Groups recommended by market study.	2014 & Ongoing	Steering Committee	Staff Time	COSA

SS/vv
06/26/14
Item #16

AN ORDINANCE 2014 - 06 - 26 - 0 516

ADOPTING REVITALIZATION PLANS FOR THE RENEWSA TARGET AREAS OF COLLINS GARDENS, EDGEWOOD, HARLANDALE, AND UNIVERSITY PARK WEST/ BLUERIDGE, AS DESIGNATED WITHIN THE 2015 U.S. DEPARTMENT OF HOUSING AND URBAN DEVELOPMENT ANNUAL ACTION PLAN, AND NORTHEAST CORRIDOR, COLLECTIVELY COMPONENTS OF THE 2009 SAN ANTONIO STRATEGIC PLAN FOR COMMUNITY DEVELOPMENT.

* * * * *

WHEREAS, REnewSA is a new collaborative initiative for coordinating and targeting community development resources to return vacant, neglected, and underutilized properties to productive use; and

WHEREAS, REnewSA is a partnership between multiple City departments and outside partner agencies including the San Antonio Housing Authority (SAHA); and

WHEREAS, REnewSA targets the allocation of community development programs to smaller geographies within the City that exhibit a balance of need and market potential and commits resources to these target areas for a sustained period to increase the likelihood of tipping these areas from marginal to marketable; and

WHEREAS, the initial focus of REnewSA is on five target neighborhoods, Collins Gardens, Edgewood, Harlandale, University Park West/ Blueridge, and Wheatley, and one commercial corridor, the Northeast Corridor (Perrin Beitel + Nacogdoches); and

WHEREAS, designation of the five REnewSA Target Neighborhoods was approved by the City Council of the City of San Antonio on August 1, 2013 as part of the City's U.S. Department of Housing and Urban Development (HUD) Annual Action Plan; and

WHEREAS, City Council approved a FY 2014 Federal Entitlement Grants Strategy that allocates funds for the facade improvement, catalytic project, owner-occupied rehabilitation, homebuyer incentive, and minor repair programs to the five target neighborhoods; and

WHEREAS, additionally, City Council allocated \$700,000.00 from the FY 2014 General Fund budget for property acquisition, construction loans, proactive code abatements, a pilot receivership program, and REnewSA website development, outreach, and marketing; and

SS/vv
06/26/14
Item #16

WHEREAS, the Northeast Corridor (NEC) was designated in FY 2013 when funds were allocated in the General Fund budget to hire a Corridor Manager to develop and manage a revitalization program for Perrin Beitel (Nacogdoches was later added); and

WHEREAS, funding for this position was reauthorized in the FY 2014 Budget; and

WHEREAS, the FY 2013 Budget also included \$25,000.00 that was utilized for a detailed market study for the NEC; **NOW THEREFORE:**

BE IT ORDAINED BY THE CITY COUNCIL OF THE CITY OF SAN ANTONIO:

SECTION 1. The Revitalization Plans as proposed for the REnewSA Target Areas of Collins Gardens, Edgewood, Harlandale, and University Park West/ Blueridge, as designated within the 2015 U.S. Department of Housing and Urban Development Annual Action Plan, and Northeast Corridor, collectively components of the 2009 San Antonio Strategic Plan for Community Development, are hereby adopted. Copies of the proposed plans for the Target Areas are attached hereto and incorporated herein for all purposes as **Attachment I-V**, respectively.

SECTION 2. The financial allocations in this Ordinance are subject to approval by the Director of Finance, City of San Antonio. The Director of Finance, may, subject to concurrence by the City Manager or the City Manager's designee, correct allocations to specific SAP Fund Numbers, SAP Project Definitions, SAP WBS Elements, SAP Internal Orders, SAP Fund Centers, SAP Cost Centers, SAP Functional Areas, SAP Funds Reservation Document Numbers and SAP GL Accounts as necessary to carry out the purpose of this Ordinance.

SECTION 3. This ordinance is effective immediately upon the receipt of eight affirmative votes; otherwise, it is effective ten days after passage.

PASSED AND APPROVED this 26th day of June, 2014.

M A Y O R
Julián Castro

ATTEST:

Jecica M. Vicek, City Clerk

APPROVED AS TO FORM:

Robert F. Greenblum, City Attorney



Prepared by the City of San Antonio
Department of Planning & Community Development