



# WESTSIDE STRATEGIC AREA STUDY



Good Samaritan Center and  
Cassiano Homes Area



CITY OF SAN ANTONIO  
**PLANNING DEPARTMENT**

May 24, 2021

## TABLE OF CONTENTS

PROJECT OVERVIEW	4
CONCEPT OVERVIEW AND DESIGN INTENT	6
PEDESTRIAN AND BICYCLE CONNECTIVITY	8
FACILITY IMPROVEMENTS - GOOD SAMARITAN CENTER	18
FACILITY IMPROVEMENTS - ST. TIMOTHY CATHOLIC CHURCH AND 19TH STREET INFILL	20
JUAN VIDAURRI PARK IMPROVEMENTS	22
FATHER ALBERT BENAVIDES PARK IMPROVEMENTS	24
CONCLUSION	26
PROJECT IMPROVEMENTS TABLE	27

## COMMUNITY STAKEHOLDERS

Simon Salas	Good Samaritan Center
Ale Arquisola	Good Samaritan Center
Anthony Gres	Westside Neighborhood Association Coalition (WNAC)
Socorro Gres	Westside Neighborhood Association Coalition (WNAC)
Herlinda Bocanegra	Westside Neighborhood Association Coalition (WNAC)
Sister Jane Ann Slater	Archdiocese of San Antonio
Lori Peery	Archdiocese of San Antonio
Fr. Juan Carlos	St. Timothy Catholic Church
Gabriel Gonzales	St. Timothy COPS/Metro
Natalia Soriano-Tovar	St. Timothy COPS/Metro
Leila Powell	Local Initiatives Support Corporation (LISC)
Lori Hall	Local Initiatives Support Corporation (LISC)
Richard Milk	San Antonio Housing Authority (SAHA)
Stephanie Rodriguez	San Antonio Housing Authority (SAHA)
Hanna Hunter	San Antonio Housing Authority (SAHA)
Garrett Phillips	San Antonio River Authority (SARA)

## CITY DEPARTMENTS

Department of Human Services  
Neighborhood and Housing Services Department  
Parks and Recreation  
Public Works Department  
San Antonio Metropolitan Health District (Metro Health)  
Transportation Department

## DISTRICT 5 COUNCIL OFFICE

Shirley Gonzales	District 5 Councilwoman
------------------	-------------------------

## PROJECT TEAM

Chris Ryerson	Planning Department
Bridgett White	Planning Department
Francisco Gónima	Francisco Gónima Executive Coaching & Strategy
Jay Renkens	MIG, Inc.
Andy Rutz	MIG, Inc.
Krystin Ramirez	MIG, Inc.
Hannah Watson	MIG, Inc.

## PROJECT OVERVIEW

City Council District 5 secured funding in the Fiscal Year 2019 Budget for focused studies of three strategic community hubs on the Westside of San Antonio. The goal of the studies was to enhance community appeal and connectivity, and to identify and implement investments and programs that will help create a unified sense of place in each area. The three community hubs include:

- The Good Samaritan Center/Cassiano Homes Apartments Area;
- The Las Palmas Area; and
- The Madonna Neighborhood Center and Gardendale Elementary Area.

**The Good Samaritan Center (Good Sam)/Cassiano Homes Area** also includes other important community assets such as St. Timothy Catholic Church, Vidaurri Park, Father Albert Benavides Park, Apache Park, Cassiano Park, Apache Creek Trail, and the CommuniCare Health Centers West Campus. Several schools are located within or immediately adjacent to the study area including Brewer Academy, Sarah S. King Elementary School, Carvajal Elementary School, and Rhodes Middle School.

Despite the proximity of so many community assets and outdoor recreation options, stakeholders stressed that area residents do not feel safe or comfortable walking and bicycling around the neighborhood. High traffic speeds and a lack of defined and protected multimodal facilities often prevent people from getting healthy exercise, or commuting to school, work, or other activities. Thus, mobility and pedestrian safety emerged as the key issue around which to focus design concepts and future investment. In addition,

long-awaited improvements to local parks and investments in local community-serving institutions were prioritized to help them better meet their enormous commitments and contributions to community well-being.

The concepts and recommendations build upon a foundation of previous public input and coordination by the Good Samaritan Center and St. Timothy Catholic Church and previous plans for parks in the area. Community stakeholders from the Westside Neighborhood Association Coalition and the St. Timothy Catholic Church Senior Center provided invaluable insight into the real challenges facing the area and greatly improved process outcomes by redirecting design ideas on several occasions when they veered away from what is most important to neighborhood residents.

The concept development process included an evaluation of community and public assets in each area; multiple stakeholder interviews and discussions; and three Stakeholder Advisory Group meetings, all resulting in the identification of needs and opportunities as well as recommendations for facility, park,

street, and public space improvements that may be candidates for the 2022 Bond Program. In addition, the study sought to establish a coordinated approach among area organizations and agencies for more coordinated community service provision and use of shared spaces and resources.

The concepts and recommendations outlined in this report reflect the goals and design objectives of the community. Everyone understood throughout the process that more detailed public input, design, and engineering processes will occur if this project is approved and funded in the 2022 Bond Program.


The next section provides an overview of the design concepts and objectives. Following that are sections with more detailed descriptions and accompanying conceptual illustrations of the various recommended improvement categories. The report concludes with a Project Improvements Table that lists each main recommended improvement, key partners, potential champions, and high-level cost estimates.







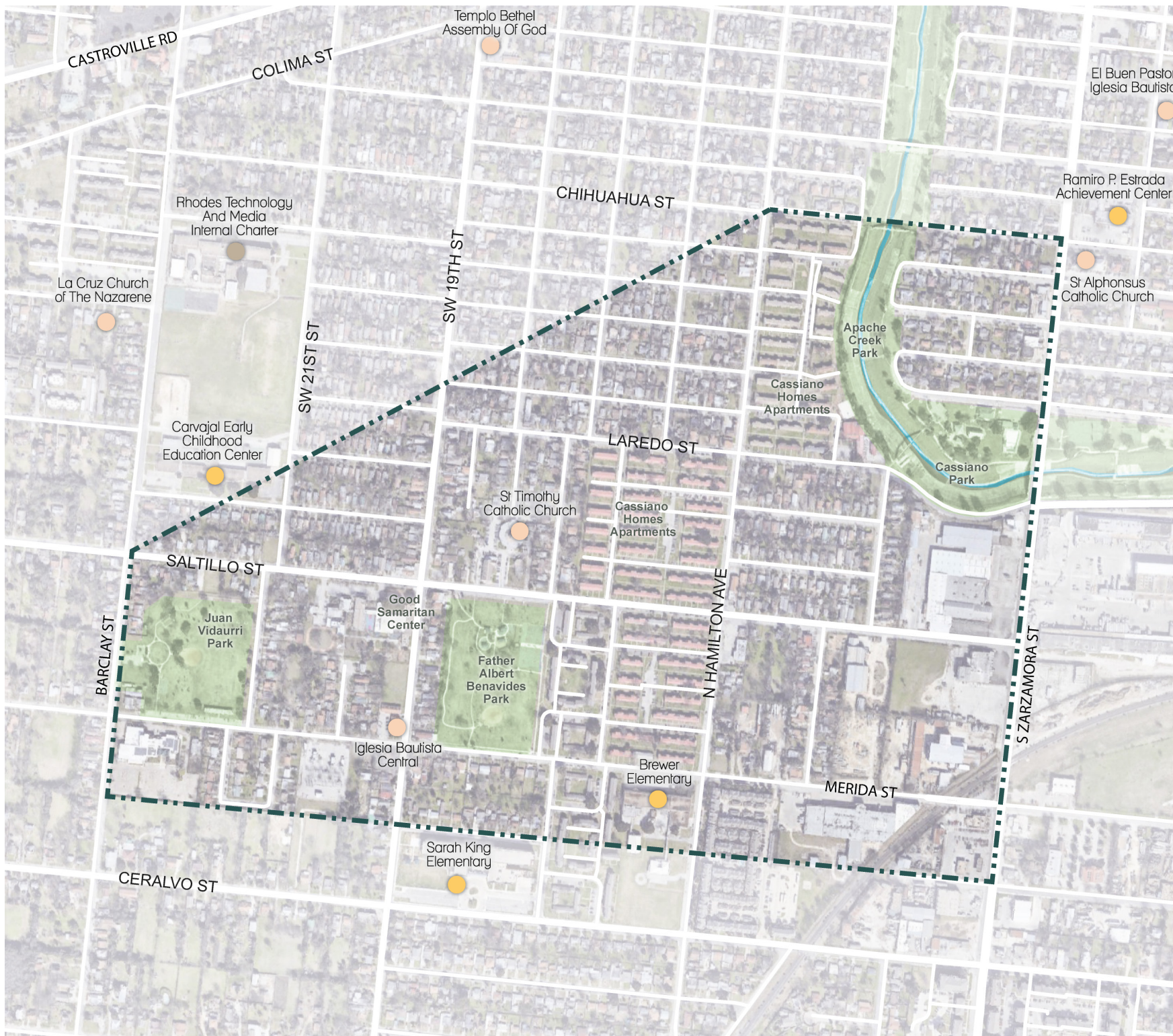
Stakeholder Advisory Group Meeting [via Zoom]

# Westside Strategic Areas Base Map

## GOOD SAMARITAN CENTER & CASSIANO HOMES AREA

**LEGEND**  
 Park or Open Space  
 Stream  
 Strategic Area Boundary

**Community Amenities**  
 Public School  
 Private School  
 Charter School  
 Place of Worship



## CONCEPT OVERVIEW & DESIGN INTENT

For the purposes of being considered for the 2022 Bond Program as currently structured, the recommended improvements are grouped to align with typical Bond propositions such as Streets, Facilities, and Parks. Although each category of improvements reflects important community objectives and can stand alone, community stakeholders advocate that a comprehensive and holistic approach is taken to ensure all of these mutually supportive concepts are considered for future investments. Each category is briefly described below, with more detail and conceptual illustrations provided in the sections that follow

### **Pedestrian and Bicycle Connectivity**

Pedestrian and bicycle safety emerged as a key priority of the community for future investments. Early analysis and exploration of different multimodal improvements quickly revealed that a one-size-fits-all solution would not comprehensively address mobility concerns in the area. Several concepts are presented that could be applied throughout the area based on road width, traffic patterns, VIA Metropolitan Transit bus routes, funding, and adjacent land use context.

### **Cassiano Homes Multi-Use Path**

In areas where enough space is available between the road and adjacent buildings, off-street multi-use paths can provide a much safer environment away from automobile traffic for those walking and bicycling in the area. Proper signage, lighting, and attention to path-roadway intersections are crucial to good design of these facilities. This project will improve pedestrian and bicycle connectivity and also provide a strong community-based placemaking element.

### **Cycle Track and Connection to Cassiano Park**

On-street cycle tracks can be used where road widths exceed that needed for safe automobile speeds. The cycle track helps narrow the road as well as provide a safe, buffered facility for bicyclists to ride safely. Cycle tracks can be designed in many ways, and the exact configuration applicable to a particular street requires community input and more detailed study.

### **Cycle Track to Multi-Use Path**

Even on streets with the width to accommodate an on-street cycle track, if the adjacent land use and property ownership allows for an off-street multi-use path, that will almost always be the desired option. This section presents a concept for how these two multimodal facilities can transition from one to the other in areas where the land use context changes.

### **Alternative Traffic Calming Street Concepts**

A number of streets in the area are not wide enough to accommodate dedicated bike facilities or wider sidewalks or multi-use paths. Several concepts are presented for street designs that help slow traffic, while still preserving on-street parking and local traffic access.

### **Facility Improvements – Good Samaritan Center**

The Good Samaritan Center (Good Sam) has been serving the Westside for decades, providing valuable services for all age ranges, from expecting mothers to toddlers to teens and seniors. As its mission and service provision have grown and evolved over the years, the need to invest in new facilities that match that mission are necessary. The organization places a high value on creating a new facility that allows flexibility in programming and that can be used both by Good Sam programs as well as by third party community groups in need of meeting, classroom, or event space.

### **Facility Improvements – St. Timothy Catholic Church and 19th Street Infill**

St. Timothy Catholic Church also has a decades-long presence in this part of the Westside. St. Timothy COPS/Metro and the St. Timothy Senior Nutrition Program provide valuable community services and help lead other community restoration efforts such as improving Father Albert Benavides Park. To continue effectively providing these community services, several facilities improvements are needed, including the repaving of the west parking lot as well as expanding the Senior space at St. Timothy with ADA compatible upgrades including bathrooms and additional storage.

### **Park Improvements – Vidaurri Park**

Vidaurri Park is one of two large parks in the neighborhood and is well used by both local residents as well as families visiting the CommuniCare Health Center across Merida Street. Shade structures for each major activity area would increase park use, as would as a toddler-age playground for the many families living in and visiting the area.

### **Park Improvements – Father Albert Benavides Park**

The community requests continued implementation of the Benavides Park Development Plan endorsed by St. Timothy COPS/Metro in 2019. Additional sports fields, a basketball court shade cover, parking, and walking trail realignment are important items not yet realized from that plan.

*Please note: illustrations and example photographs included throughout this document are meant to convey design intent and provide examples of how the recommended concepts and features might look. Future community input, design, and engineering processes should use them as a starting point for guiding their conversations, but final details could certainly vary from exactly what is shown here within.*

# Westside Strategic Areas

## GOOD SAMARITAN CENTER & CASSIANO HOMES AREA

 Strategic Area Boundary



### Bicycle & Pedestrian Network Connectivity (Linking Community Assets)

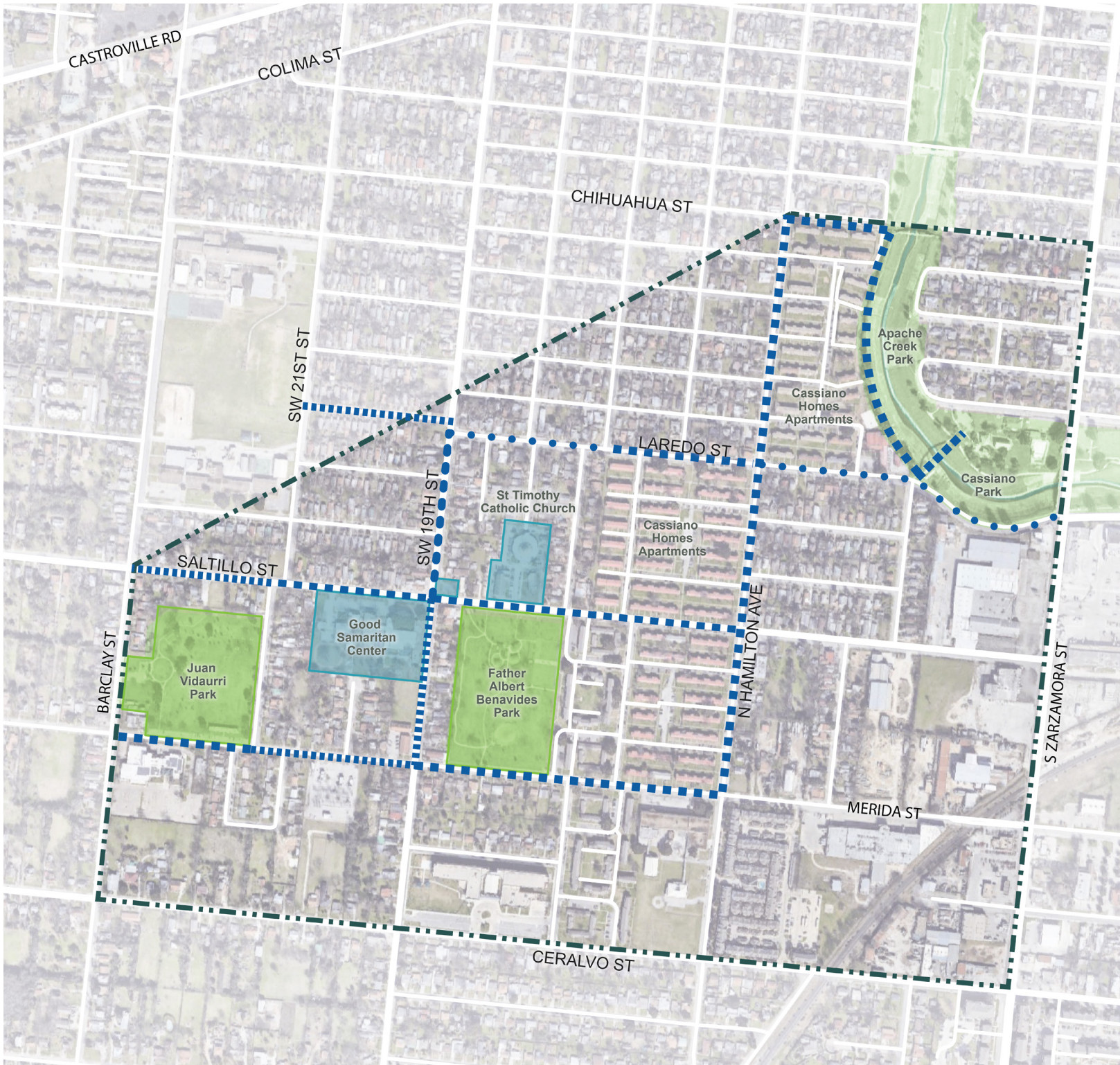
-  - Multi-use Path
-  - Cycle Track
-  - Sharrow
-  - Pedestrian Improvements

### Facility Improvements

-  - St. Timothy's Campus
-  - Good Samaritan Center Campus
-  - Strategic Infill on 19th & Saltillo

### Park Master Plan Implementation

-  - Juan Vidaurri Park
-  - Father Albert Benavides Park



## PEDESTRIAN AND BICYCLE CONNECTIVITY

Connecting the many parks, schools, and community amenities in the area surrounding Good Sam and the Cassiano Homes with a safe and comfortable pedestrian and bicycle network is one of the top public investment priorities for this Westside community. Area streets are built to varying widths, serve different traffic volumes, and have varying on-street parking needs and adjacent land uses. A one-size-fits-all approach does not work; a more tailored multimodal strategy is needed to meet the needs of the community. Off-street multi-use paths, on-street cycle tracks, and hybrid facilities are all options that can be applied as needed in different parts of the neighborhood. It is important to ensure that funded improvements build a network, and that projects are not done with limited extents that leave new facilities and mobility options unconnected. As the map on the facing page shows, even though one facility type is not applicable across the area, the creative linking of various multimodal improvements can create a network that allows residents to easily navigate through the Westside's street grid.

The concepts presented in the report are just that – concepts the community has prioritized as good options to achieve their goals and intent. Should this project receive Bond Program funding, further community input and detailed design will be needed to ensure each facility meets engineering and safety standards. Another big task requiring future detailed work will be careful design of intersections and other places where different facility types meet or cross each other. S Laredo Street and SW 19th Street, S Laredo Street and S Hamilton Avenue, Saltillo Street and S Hamilton Avenue, and Saltillo Street and SW 19th Street stand out as particularly important for careful intersection design. Intersection improvements should prioritize pedestrian and bicycle safety, overall visibility, and legibility.

Community members also stressed that future design and project analysis should include an ADA accessibility audit of the area to ensure that future investments are accessible to and benefit everyone in the community, regardless of age or ability level. An ADA audit will help to further prioritize various public realm improvements by identifying areas where sidewalk width or condition is inadequate, curb ramps are missing, and crossing treatments are not accessible.



Biking




Walking

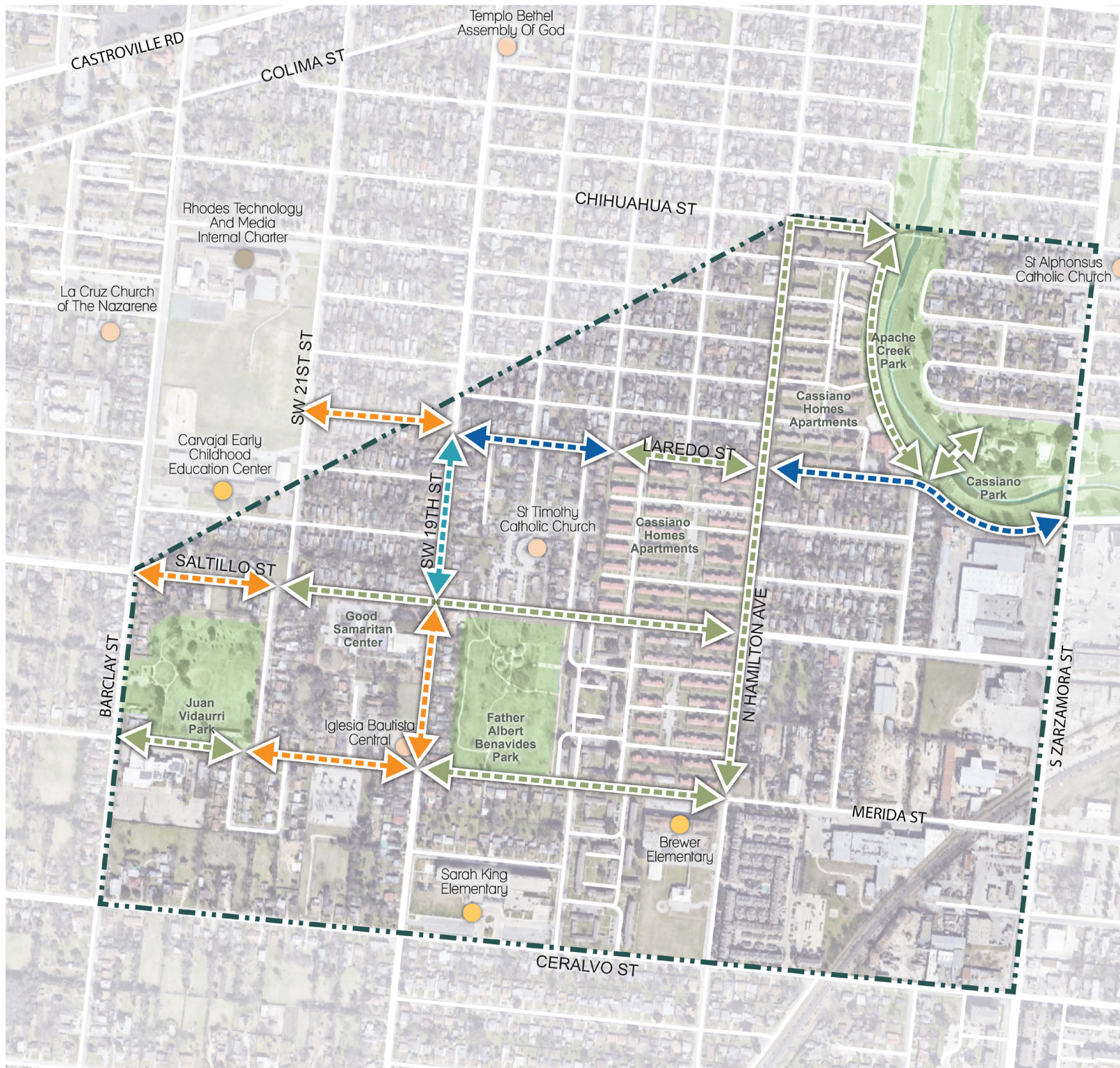


# Westside Strategic Areas

## GOOD SAMARITAN CENTER & CASSIANO HOMES AREA

-  Strategic Area Boundary
-  Public School
-  Park or Open Space
-  Charter School
-  Stream
-  Place of Worship

- Bicycle & Pedestrian Connectivity
-  Multi-Use Path
  -  Cycle Track
  -  Sharrow
  -  Pedestrian Improvements





Cassiano Homes Apartments - Aspirational Illustration



Multi-Use Path



Tree-Lined Walkway



## CASSIANO HOMES MULTI-USE PATH

Off-street multi-use paths are a high priority for multimodal improvements in the community and are most applicable to the following areas: Hamilton Avenue, portions of Saltillo Street and Merida Street, and on the east side of the Cassiano Homes Apartments above the Apache Creek and Greenway Trail (between Chihuahua Street and Laredo Street). These areas were identified because they run along either City-owned or San Antonio Housing Authority (SAHA)-owned properties that would allow easements for building the paths off-street, away from traffic as depicted in the illustration. The paths should be built 10-12 feet wide to accommodate a variety of users simultaneously. For multi-use paths built on SAHA property, the City and SAHA will need to negotiate maintenance obligations. Construction of these multi-use paths would be an excellent opportunity to also underground utility and telecommunications lines.

Lighting, signage, shade trees, planting, and well-designed driveway crossings with clear site lines will be important design elements. Additional design aspects to consider are proper striping of on-street parking spaces to encourage their use as a buffer against traffic; and vegetated bulb-outs at intersections and driveways to ensure pedestrians, bicyclists, and playing children are clearly visible to turning vehicles. Also, given the historic nature of the Cassiano Homes and the beloved murals on the ends of the buildings, the community would like to see the murals restored and celebrated as part of the project. If mural restoration and informative signage cannot be covered by the "1% for Public Art" aspect of the Bond Program, alternative funding sources should be sought out to ensure the restoration is completed in conjunction with the construction of the multi-use paths.

The San Antonio River Authority (SARA) has several funding programs to help support green infrastructure improvements that reduce flooding and storm sewer overflow as well as improve water quality. Green infrastructure can be implemented in a variety of creative ways along the multi-use trails and in bulb-outs/curb extensions.

Bicycle Cycle-Track



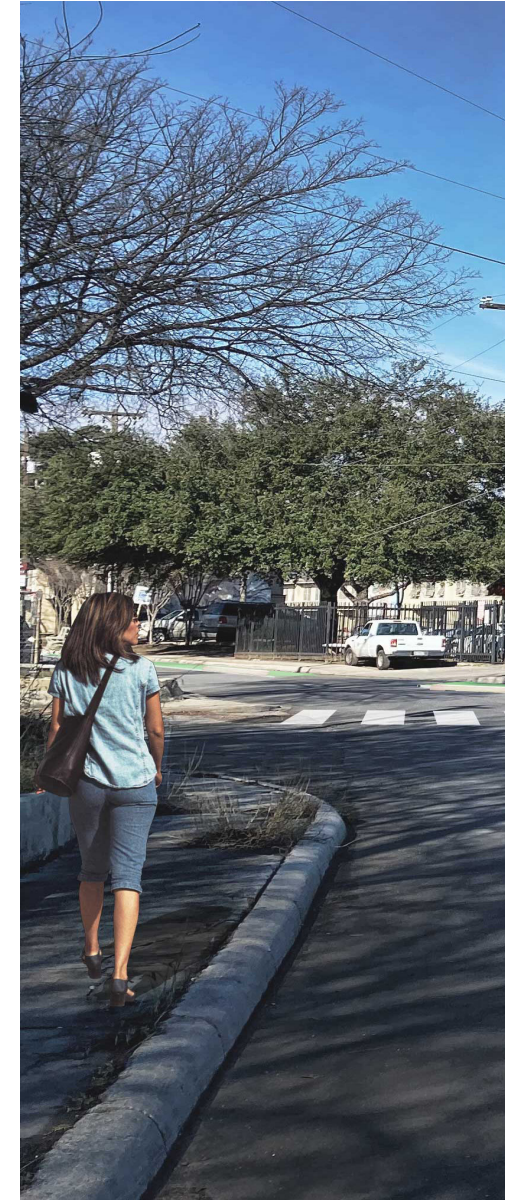
Public Artwork



## CYCLE TRACK AND CONNECTION TO CASSIANO PARK

On-street cycle tracks can take several forms but should always be designed to provide protected two-way bicycling options. As depicted in the image on the facing page (looking southbound on S Laredo Street at S Elmendorf Street), one option to buffer and protect bicyclists from auto traffic is concrete curbs topped with plastic bollards. Another option is to raise the entire bikeway up to curb level. Each option should be considered for trade-offs related to overall safety and costs based on available Bond Program funding levels. In both cases, brightly colored paint and clearly marked lanes will help ensure visibility and safe use of the facility. Should bike facilities be approved in the Bond Program for this area, further community input and discussions with property owners will be needed to determine whether an on-street cycle track or an off-street multi-use trail best meets the needs of the community.

The location chosen for the accompanying concept illustration was selected because it also highlights another identified need: an improved pedestrian bridge over Apache Creek to Cassiano Park. The current bridge is quite narrow, limiting simultaneous use by more than a few people, and is built with materials that limit visibility and thus decrease safety. A new walking and biking bridge will better connect Cassiano Homes residents and others in the neighborhood to nearby Cassiano, Apache, and Escobar parks. It would also provide better access to the expanding Westside Creeks Greenway trail system that provides connections to other Westside neighborhoods, employment and education opportunities, and other recreational greenway trail systems throughout the City. The new bridge should be wide enough to accommodate multiple users at the same time and should be constructed of materials that increase visibility and safety. The intersection of a new cycle track and the new bridge is an ideal opportunity to install public art that reflects the community.



S. Laredo Street - Aspirational Illustration





S. Laredo Street - Aspirational Illustration



Designated Street Parking



Neighborhood Signage



## CYCLE TRACK TO MULTI-USE PATH

The multi-use path and cycle track concepts presented above can also be combined in creative ways at locations where the land use context changes within a particular block or segment. The illustration on this page demonstrates such a condition at S Laredo Street and SW 18th Street. In this example, the multi-use path is constructed off-street where possible in front of the Cassiano Homes apartments and then transitions seamlessly into an on-street cycle track when the block returns to private single-family homes. In both cases, well-marked on-street parking spaces are preserved, providing a visual and physical buffer that protects users of both facilities. Clear directional and wayfinding signage as well as lighting are needed to ensure safety and ease of use, especially at locations where the facility transitions from one type to the other.

Shade trees and green infrastructure can easily be integrated into such projects, both helping to beautify the area and to help control storm water and improve area water quality.

## ALTERNATIVE TRAFFIC CALMING STREET CONCEPTS

Several street segments in the Good Samaritan Center and Cassiano Homes Area have street widths and land use contexts that may not accommodate implementation of cycle tracks or multi-use paths yet are still a concern for area residents due to high traffic speeds near activity centers such as Good Sam and Vidaurri and Father Albert Benavides parks. SW 19th Street between S Laredo Street and Merida Street was the most cited example. Several alternative roadway designs were presented to the community that would help slow traffic, protect pedestrians, and still provide some on-street parking. Each option has pros and cons. After discussing trade-offs, area stakeholders prioritized two options that would be the best fit for more detailed study and implementation.

The example on the top of the facing page shows a Alternating Curb Extension in which vegetated bulb-outs are installed on alternating sides of the street. This removes a few on-street parking spaces, but periodically narrows the roadway which slows traffic, shortens pedestrian crossing distances, and creates visual cues to drivers that extra care is needed to pass through the area safely.

The example below illustrates how a multi-use path could be installed, but with the trade-off being loss of on-street parking on one side of the street. In this case, the multi-use path is protected from automobile traffic by on-street parking on the side where it remains. Speed bumps can also be used in the traffic lanes to further slow speeds and improve safety. An on-street cycle track would also be an option that fits this roadway condition. This option would place bicyclists closer to traffic and parked cars and be dedicated to bicyclists rather than the mix of pedestrians and bicyclists intended for the multi-use path. Because the cycle track option could be implemented by painting the roadway and installing simple bollards and would most likely not involve reconstructing the road and curb, it could be a more affordable option.

In both cases, additional street trees will provide shade for pedestrians and beautify the area.



Traffic Calming Speed Bump



Multi-use Path





Alternating Curb Extension Street Improvement Option

- 11' Thru Lanes
- 4' Planting Strip to Facilitate Additional Trees
- Curb Bump Outs for Slower Vehicle Speeds
- Parking on Both Sides of Street



Multi-use Path Street Improvement Option

- Multi-use Path for Walking & Biking
- Parking on One Side of Street
- Extended Planting Strip for Additional Trees
- Speed Bump Implemented for Slower Vehicle Speeds

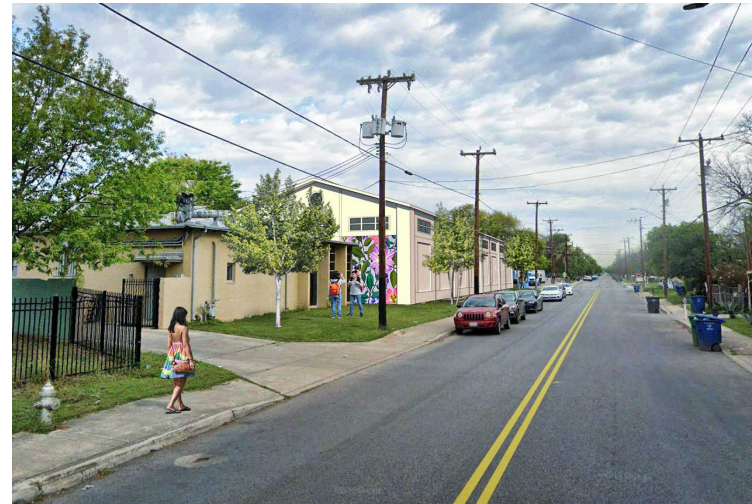
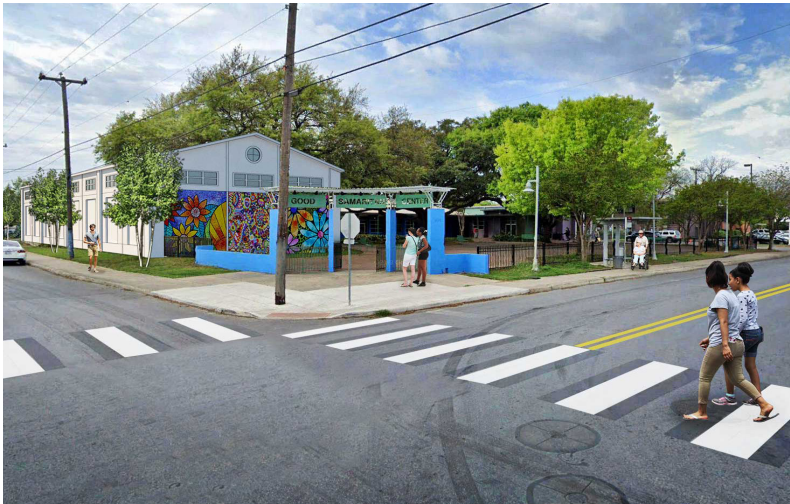
## FACILITY IMPROVEMENTS

### Good Samaritan Center

The Good Samaritan Center has identified a need for a new, flexible facility that will enable it to continue to improve and evolve its service and program offerings to the community and better organize its campus. Design parameters include a building height and style that complements the surrounding neighborhood, maintaining the open feel of and visibility across the middle of the campus, and preserving the large 60- to 70-year-old trees on the northeast corner of the property.

Relocating the Early Childhood Learning Center from the eastern edge of the campus to the Youth Building toward the middle of the campus provides the opportunity to construct a new, two-story multi-use “Cafe-gym-atorium” Building along SW 19th Street. The vision for this building is to support multiple uses in a very cost-effective manner, providing a home for youth programming that can be easily transformed between uses such as a cafeteria, indoor gymnasium/multi-sport court, meeting space, or performance venue. The building would also have meeting and classroom spaces available to third party community groups, accessible from the SW 19th Street edge, thus preserving campus security during off hours.

The Good Samaritan Center also expressed an interest in working with San Antonio River Authority (SARA) to implement green infrastructure improvements in its parking lot.



Good Samaritan East Wing - “Cafe-gym-atorium” Addition Massing Studies

Cafe-gym-atorium



Children's Early Learning Center



Community Garden



Evening Amenity Access Gate

## FACILITY IMPROVEMENTS

### St. Timothy Catholic Church & 19th St. Infill

St. Timothy Catholic Church serves this Westside community in many ways, and its senior program is one of the most important. However, St. Timothy Hall which is the heart of activity for the church and its charitable and community service programs needs repairs and upgrades to continue operating in an efficient manner for those most vulnerable in the neighborhood. The following are the most needed improvements:

- **Repave the west parking lot** to ensure an even walking surface that is safe for seniors and children and that can safely host community programs and events.
- **Rebuild and expand men's and women's restrooms** for full ADA compliance.
- **Insulate the St. Timothy Senior Center** to ensure comfort in all seasons and to reduce energy waste and utility costs.

- **Expand the Senior Center** by approximately 600 square feet to accommodate a **storage and utility room** as well as a **small senior fitness room**.

St. Timothy also owns and maintains the small lot on the northeast corner of SW 19th and Saltillo streets. Several options for uses and partnerships were discussed to activate this space. St. Timothy Church and Good Sam both expressed an interest in a potential partnership. While both organizations often need more parking, the lot realistically only accommodates 8-10 cars, so other uses may be more desirable and effective. A small, infill building was discussed with a variety of potential uses including a community bike shop/repair center. However, further discussions will be needed to settle on a use that best fits the needs of the community and the potential partners. In the meantime, activating the lot with temporary uses and events may be a way to test out different ideas and get community feedback.

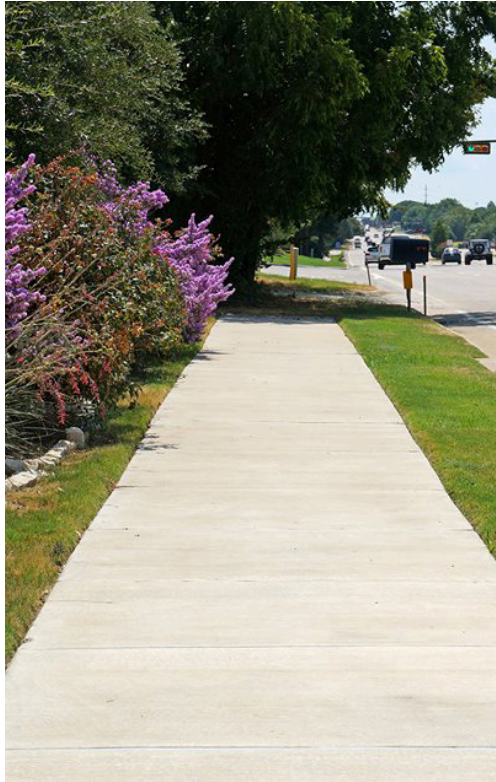


ADA Building Improvements



Community Gathering Space

Improved Sidewalks



Neighborhood Partner Space



St. Timothy Church

## JUAN VIDAURRI PARK IMPROVEMENTS

Vidaurri Park does not have a previous master plan but is much loved and used by the community. It receives additional use from families visiting the CommuniCare Health Center just across Merida Street. Several desired improvements were identified by the community, including:

- A new **play area designed for toddlers and younger children**. The current playground equipment is targeted to an older age group. Safety elements including fencing between the play area and the parking lot as well as safety fall material should be incorporated into the design.
- **Shade structures** for all park amenities, including the play areas and the fitness area would increase comfort and use of the park, especially during San Antonio's hot summers.
- Explore creating an **entry into the park from Saltillo Street**.
- **Increase programming** that will attract users of all ages to the park.



Increased Tree Canopy & Seating

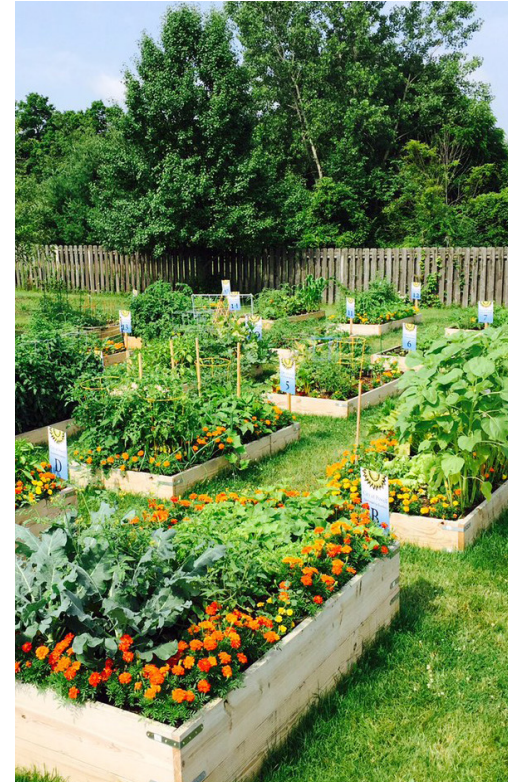


Shaded Toddler Play Area

New Soccer Fields



Community Garden



Community Fitness Classes



Park Entry Feature

## FATHER ALBERT BENAVIDES PARK IMPROVEMENTS

The Father Albert Benavides Park Development Plan was developed and endorsed by St. Timothy COPS/Metro in 2019, and some recommendations have been implemented. However, the community would like to see all elements identified in the Development Plan come to fruition. Remaining priorities include:

- Two **kids' soccer fields** with proper lighting and seating areas.
- Improve the existing **baseball field** with fencing, seating areas, ADA-compliant sidewalks, and lighting.
- Add a **large shade cover over the basketball courts that includes lighting**. The basketball courts are in especially high demand and are utilized by several non-profit youth groups in the area that support more than 300 families in the Cassiano Homes and surrounding single family neighborhood.
- Construct a **40 to 50 car parking lot** that can better accommodate large groups and events and help reduce excessive parking along Merida Street that sometime impedes traffic flow.
- Re-align and improve the **walking trail** which would be impacted by the construction of the soccer fields and the parking lot.



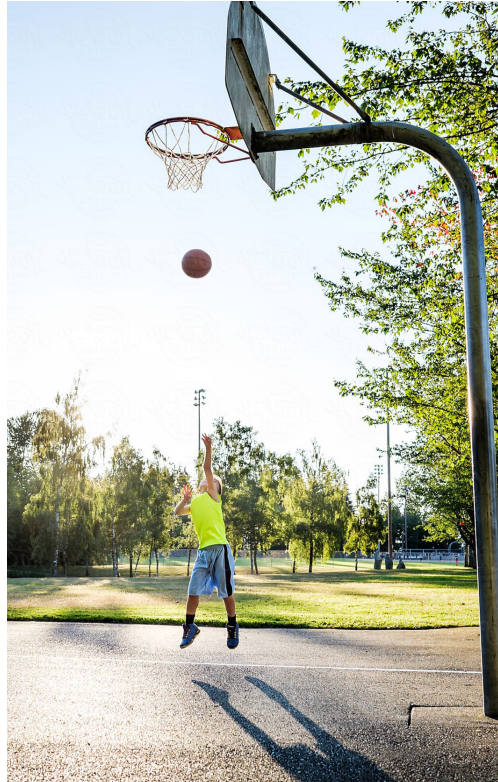
Enhanced Walking Paths



Shaded Seating Areas



Improved Basketball Courts



Shaded Playground Equipment



Increased Tree Canopy



Community Fitness Classes

## CONCLUSION

The Good Samaritan Center and Cassiano Homes Area community has deep roots in and love for their neighborhood. Several stakeholders shared childhood memories of playing in and visiting some of the very spaces mentioned in this report. While there is obvious pride in being a part of this neighborhood, there is also a strong desire to see it improved in ways that meaningfully impact the residents' quality of life.

Creating a safe and comfortable pedestrian and bicycle network that allows community members to easily get exercise and commute to school, work, church or other activities is paramount. The area is rich in community amenities, but their value is diminished if they are not easily accessible to those who need them most. Future Bond Programs should explore extending the pedestrian and bicycle improvements outside the study area to expand the network and increase connections and accessibility to other Westside neighborhoods and amenities.

Facility improvements and increased programming that help the Vidaurri and Benavides parks secure their place as the center of recreational and social activity is especially crucial in an area where many families living at Cassiano Homes do not have private yards for play and gathering. Public spaces need to fill that important role and must receive investments commensurate with that importance. Simple improvements to area parks will greatly increase their utility and provide options that appeal to all ages and interests.

The Good Samaritan Center and St. Timothy Catholic Church both have a long-standing role of helping those in need in the community and providing spaces for the community to gather for learning, spirituality, wellness, and celebration. New and upgraded facilities for these organizations will help empower them to better fulfill their important missions.

The community stakeholders recognize that not every investment suggested in this concept design will be eligible for bond funding. However, it was important to include all the priorities, both big and small to faithfully express the depth and detail of their collective vision. It is hoped that additional funding sources, partnerships, and creative collaborations can be identified to fill the gaps and implement items that fall outside the strict parameters of the Bond Program funding mechanism.

The Project Improvement Table on the next page provides a simple summary of the major investments likely to be eligible for the Bond Program. It also includes key partners for collaboration, potential champions for both the Bond Program process itself as well as future community input and design processes, and high-level, planning cost estimates, which do not include soft costs. For inclusion into the formal Bond Program process, each item will need more detailed review and assessment by Public Works staff and/or their consultant team to derive more precise cost figures.

## PROJECT IMPROVEMENTS TABLE

IMPROVEMENT	ORDER OF MAGNITUDE COST ESTIMATE	KEY PARTNERS	POTENTIAL CHAMPIONS
<b>PEDESTRIAN AND BICYCLE CONNECTIVITY</b>			
CASSIANO HOMES MULTI-USE PATH	~\$13,500,000	SAHA, Public Works, Parks and Recreation	Westside Neighborhood Association Coalition, Good Samaritan Center
CYCLE TRACK AND CONNECTION TO CASSIANO PARK	~\$2,000,000	Public Works, Parks and Recreation	Westside Neighborhood Association Coalition, SAHA
SHARROWS (CONNECTIONS TO OTHER FACILITY TYPES)	~\$150,000	Public Works	Westside Neighborhood Association Coalition
ALTERNATIVE TRAFFIC CALMING CONCEPTS (FULL RECONSTRUCTION WITH MULTI-USE PATH ON SW 19TH STREET)	~\$2,500,000	Public Works	Westside Neighborhood Association Coalition, Good Samaritan Center
<b>FACILITY IMPROVEMENTS</b>			
GOOD SAMARITAN CENTER (LEVERAGE FUNDING FOR FACILITY IMPROVEMENTS TO INCLUDE CAFE-GYM-ATORIUM, ETC.)	~\$1,500,000	Good Samaritan Center	Westside Neighborhood Association Coalition
ST. TIMOTHY CATHOLIC CHURCH AND 19TH STREET INFILL (LEVERAGE FUNDING FOR PARKING AND BUILDING IMPROVEMENTS / EXPANSION, ETC.)	~\$1,500,000	St. Timothy Catholic Church, Archdiocese of San Antonio	Good Samaritan Center
<b>JUAN VIDAURRI PARK IMPROVEMENTS</b>			
PARK IMPROVEMENTS (TODDLER PLAY AREA, SHADE STRUCTURES, SAFETY IMPROVEMENTS, PROGRAMMING, ETC.)	~\$750,000	Parks and Recreation	Westside Neighborhood Association Coalition
<b>FATHER ALBERT BENAVIDES PARK IMPROVEMENTS</b>			
DEVELOPMENT PLAN IMPLEMENTATION (IMPROVEMENTS IN SUPPORT OF THE PARK DEVELOPMENT PLAN - SPORT FIELDS, SHADE COVER, LIGHTING, PARKING, WALKING TRAIL, ETC.))	~\$1,500,000	Parks and Recreation	Westside Neighborhood Association Coalition



CITY OF SAN ANTONIO  
**PLANNING DEPARTMENT**

